

EXTRA LARGE WAREHOUSE UNIT COOLER

Technical Guide



TABLE OF CONTENTS

3	Features & Benefits
3	Outstanding Features
4	Nomenclature
4	Capacity Correction Factors
5	Air Defrost
5	Performance Data
5	Selection Capacity: Air Defrost- 60 Hz
9	Selection Capacity: Air Defrost- CO ₂ /60 Hz
11	Unit Specifications
12	Electric Defrost
12	Performance Data
12	Selection Capacity: Low Temp Electric Defrost- 60 Hz
14	Selection Capacity: Low Temp Electric Defrost- CO ₂ /60 Hz
15	Selection Capacity: Medium Temp Electric Defrost- 60 Hz
17	Selection Capacity: Medium Temp Electric Defrost- CO ₂ /60 Hz
18	Unit Specifications
20	Hot Gas Defrost
20	Performance Data
20	Selection Capacity: Hot Gas Defrost- 60 Hz
22	Unit Specifications
24	Air Defrost
24	Performance Data
24	Selection Capacity: Air Defrost- 50 Hz
28	Selection Capacity: Air Defrost- CO ₂ /50 Hz
30	Unit Specifications
31	Electric Defrost
31	Performance Data
31	Selection Capacity: Low Temp Electric Defrost- 50 Hz
33	Selection Capacity: Low Temp Electric Defrost- CO ₂ /50 Hz
34	Selection Capacity: Medium Temp Electric Defrost- 50 Hz
36	Selection Capacity: Medium Temp Electric Defrost- CO ₂ /50 Hz
37	Unit Specifications
38	Hot Gas Defrost
38	Performance Data
38	Selection Capacity: Hot Gas Defrost- 60 Hz
40	Unit Specifications
41	Physical Data
46	Dimensional Drawings
47	Replacement Parts
49	Standard Nozzle Selection



FEATURES & BENEFITS

STANDARD FEATURES

- Heavy gauge G90 galvanized cabinet provides a heavy duty, durable structure
- High capacity aluminum fin/copper tube evaporator coils with enhanced tubes
- Capacity ranges from 42,000 to 410,000 btuh
- Air, Electric and Hot gas defrost models
- Coil Fin spacing from 3 to 6 FPI
- High efficiency totally enclosed fan motors or wash down rated motors.
- Double wall insulated hinged drain pan.* Overlap design to prevent exterior condensation dripping. Drain pan is triple pitched for superior condensate removal
- Hinged fan venturi panels
- Hinged end service panels
- Standard refrigerant or CO₂ coil designs

OPTIONALS

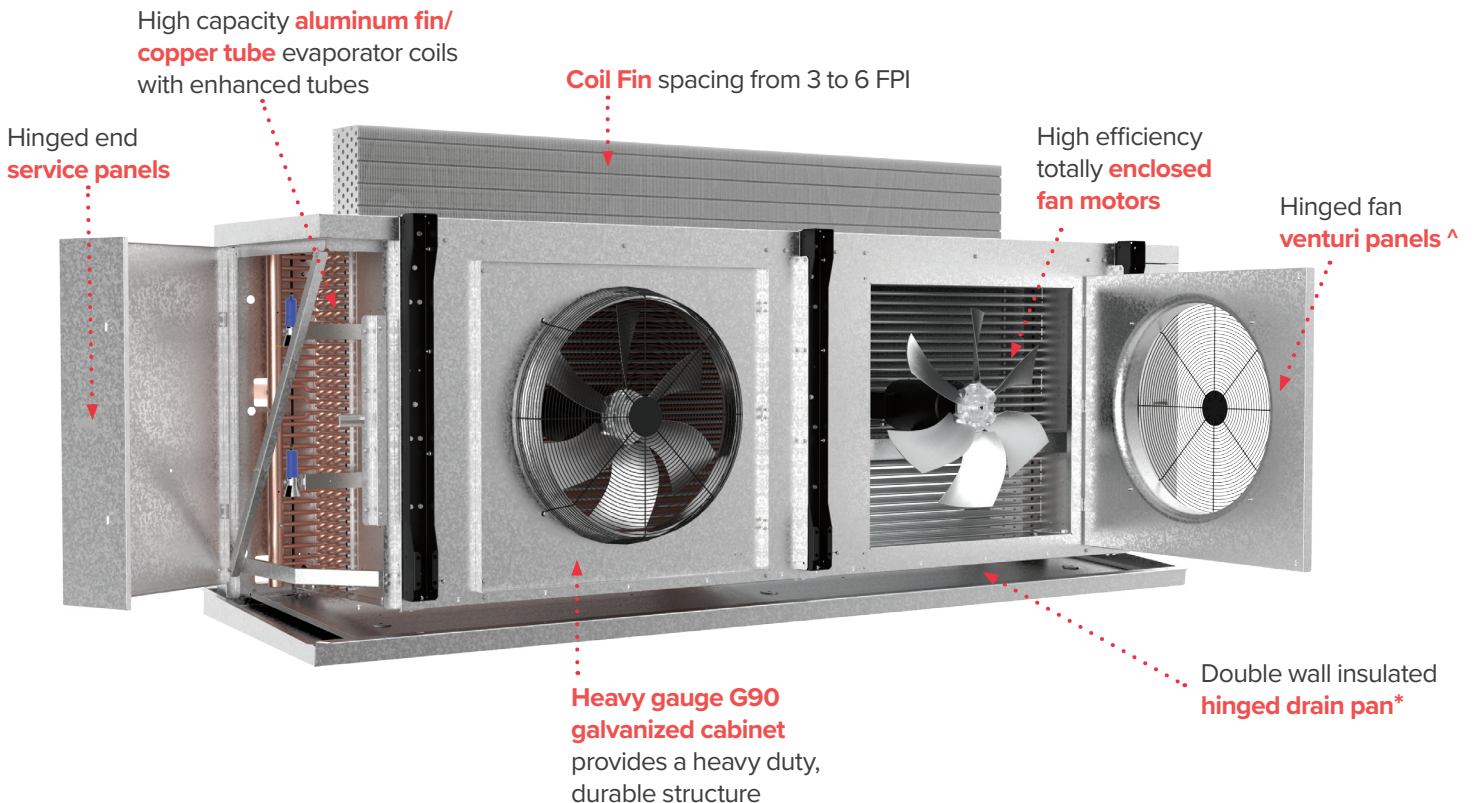
- External rotor motors with hinged venturi panel
- Variable speed motors
- Variable speed motor controls
- White painted cabinet
- Stainless steel cabinet*
- intelliGen™ Refrigeration Controller
- Mounted thermal expansion valves
- Mounted electronic expansion valves
- Mounted non-fused disconnect switch
- Coil coatings
- Long air throw fan and motor designs
- Floor mounting legs
- 45 and 90 degree air outlet configurations^
- Extended fan venturi for enhanced air throw
- Mounted solenoid valve
- Mounted thermostat

Notes:

* Hinged drain pan not available with stainless steel option

^ Hinged fan access panels not available with 45 and 90 degree air outlet configurations

OUTSTANDING FEATURES



Notes:

* Hinged drain pan not available with stainless steel option

^ Hinged fan access panels not available with 45 and 90 degree air outlet configurations

NOMENCLATURE

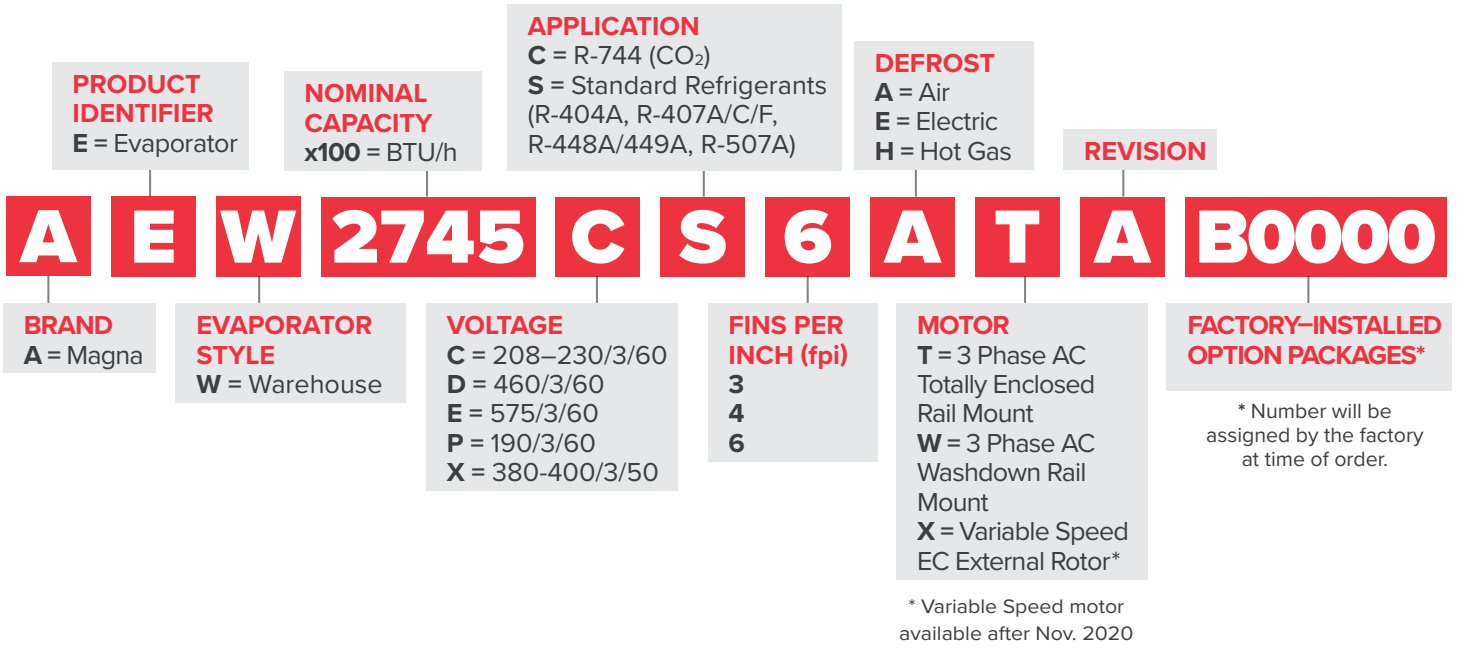


Table 1: Capacity Correction Factors[^]

Low Temperature Electric and Hot Gas Defrost Units Only					
Saturated Suction Temperature	20°F (-7°C)	-10°F (-23°C)	-20°F (-29°C)	-30°F (-34°C)	-40°F (-40°C)
Multiply Capacity By	1.15	1.04	1	0.9	0.8

[^] Correction factors provided for reference only. Contact Heatcraft sales representative for capacity information at required conditions.

PERFORMANCE DATA

Selection Capacity: Air Defrost - 60 Hz

Totally Enclosed and Variable Speed Motors														
Model	Selection Capacity				Fan Data					Air Throw				
	R-404A/R-507A		R-407A/R-407F		No. of Fans	Air Volume		Diameter		Standard		With Collar		
	10°F TD 25°F SST 80% RH	6°C TD -4°C SST 80% RH	10°F TD 25°F SST 80% RH	6°C TD -4°C SST 80% RH		CFM	m³H	in	mm	ft	m	ft	m	
	BTUH	Watts	BTUH	Watts										
6 Fins Per Inch	AEW1150CS6ATA	73,468	21,531	115,827	33,945	1	9,060	15,393	30	762	160	49	270	82
	AEW1150*S6ATA	78,157	22,906	123,220	36,112	1	10,050	17,075	30	762	180	55	300	91
	AEW1365CS6ATA	83,932	24,598	136,718	40,068	1	9,060	15,393	30	762	160	49	270	82
	AEW1365*S6ATA	89,289	26,168	145,445	42,626	1	10,050	17,075	30	762	180	55	300	91
	AEW2320CS6ATA	148,404	43,493	234,557	68,742	2	18,120	30,786	30	762	160	49	270	82
	AEW2320*S6ATA	157,877	46,269	249,529	73,130	2	20,100	34,150	30	762	180	55	300	91
	AEW2795CS6ATA	172,218	50,472	281,010	82,356	2	18,120	30,786	30	762	160	49	270	82
	AEW2795*S6ATA	183,211	53,694	298,947	87,613	2	20,100	34,150	30	762	180	55	300	91
	AEW3455CS6ATA	219,654	64,374	351,884	103,127	3	27,180	46,179	30	762	160	49	270	82
	AEW3455*S6ATA	233,674	68,483	374,345	109,710	3	30,150	51,225	30	762	180	55	300	91
	AEW4100CS6ATA	253,566	74,313	418,421	122,627	3	27,180	46,179	30	762	160	49	270	82
	AEW4100*S6ATA	269,751	79,056	445,129	130,454	3	30,150	51,225	30	762	180	55	300	91
4 Fins Per Inch	AEW0915CS4ATA	63,251	18,537	94,359	27,654	1	9,060	15,393	30	762	160	49	270	82
	AEW0915*S4ATA	67,288	19,720	100,382	29,419	1	10,050	17,075	30	762	180	55	300	91
	AEW1115CS4ATA	71,620	20,990	113,842	33,364	1	9,060	15,393	30	762	160	49	270	82
	AEW1115*S4ATA	76,191	22,329	121,109	35,494	1	10,050	17,075	30	762	180	55	300	91
	AEW1845CS4ATA	103,260	30,263	190,875	55,940	2	18,120	30,786	30	762	160	49	270	82
	AEW1845*S4ATA	109,851	32,194	203,058	59,510	2	20,100	34,150	30	762	180	55	300	91
	AEW2280CS4ATA	146,827	43,031	233,801	68,520	2	18,120	30,786	30	762	160	49	270	82
	AEW2280*S4ATA	156,199	45,777	248,724	72,894	2	20,100	34,150	30	762	180	55	300	91
	AEW2745CS4ATA	155,908	45,692	291,133	85,323	3	27,180	46,179	30	762	160	49	270	82
	AEW2745*S4ATA	165,860	48,609	309,716	90,769	3	30,150	51,225	30	762	180	55	300	91
	AEW3345CS4ATA	219,238	64,252	352,712	103,370	3	27,180	46,179	30	762	160	49	270	82
	AEW3345*S4ATA	233,232	68,354	375,225	109,968	3	30,150	51,225	30	762	180	55	300	91

Notes:

* = Electrical Code Designator, D = 460V, E = 575V (see Nomenclature for details)

PERFORMANCE DATA

Selection Capacity: Air Defrost - 60 Hz

Totally Enclosed and Variable Speed Motors														
Model	Selection Capacity				Fan Data					Air Throw				
	R-407C		R-448A/R-449A											
	10°F TD 25°F SST 80% RH	6°C TD -4°C SST 80% RH	10°F TD 25°F SST 80% RH	6°C TD -4°C SST 80% RH	No. of Fans	Air Volume		Diameter		Standard		With Collar		
	BTUH	Watts	BTUH	Watts		CFM	m ³ H	in	mm	ft	m	ft	m	
6 Fins Per Inch	AEW1150CS6ATA	121,252	35,536	119,058	34,892	1	9,060	15,393	30	762	160	49	270	82
	AEW1150*S6ATA	128,992	37,804	126,657	37,120	1	10,050	17,075	30	762	180	55	300	91
	AEW1365CS6ATA	142,977	41,902	139,316	40,830	1	9,060	15,393	30	762	160	49	270	82
	AEW1365*S6ATA	152,103	44,577	148,209	43,436	1	10,050	17,075	30	762	180	55	300	91
	AEW2320CS6ATA	245,290	71,887	240,775	70,564	2	18,120	30,786	30	762	160	49	270	82
	AEW2320*S6ATA	260,947	76,476	256,144	75,068	2	20,100	34,150	30	762	180	55	300	91
	AEW2795CS6ATA	288,959	84,685	281,650	82,544	2	18,120	30,786	30	762	160	49	270	82
	AEW2795*S6ATA	307,403	90,091	299,628	87,812	2	20,100	34,150	30	762	180	55	300	91
	AEW3455CS6ATA	358,924	105,190	370,791	108,668	3	27,180	46,179	30	762	160	49	270	82
	AEW3455*S6ATA	381,834	111,904	394,458	115,604	3	30,150	51,225	30	762	180	55	300	91
	AEW4100CS6ATA	433,900	127,164	439,592	128,832	3	27,180	46,179	30	762	160	49	270	82
	AEW4100*S6ATA	461,596	135,280	467,651	137,055	3	30,150	51,225	30	762	180	55	300	91
4 Fins Per Inch	AEW0915CS4ATA	98,855	28,972	95,826	28,084	1	9,060	15,393	30	762	160	49	270	82
	AEW0915*S4ATA	105,165	30,821	101,943	29,877	1	10,050	17,075	30	762	180	55	300	91
	AEW1115CS4ATA	119,184	34,929	114,838	33,656	1	9,060	15,393	30	762	160	49	270	82
	AEW1115*S4ATA	126,791	37,159	122,168	35,804	1	10,050	17,075	30	762	180	55	300	91
	AEW1845CS4ATA	199,724	58,533	193,551	56,724	2	18,120	30,786	30	762	160	49	270	82
	AEW1845*S4ATA	212,472	62,269	205,905	60,345	2	20,100	34,150	30	762	180	55	300	91
	AEW2280CS4ATA	240,634	70,523	231,875	67,956	2	18,120	30,786	30	762	160	49	270	82
	AEW2280*S4ATA	255,994	75,024	246,675	72,293	2	20,100	34,150	30	762	180	55	300	91
	AEW2745CS4ATA	299,805	87,864	301,349	88,317	3	27,180	46,179	30	762	160	49	270	82
	AEW2745*S4ATA	318,941	93,472	320,584	93,954	3	30,150	51,225	30	762	180	55	300	91
	AEW3345CS4ATA	368,370	107,959	369,681	108,343	3	27,180	46,179	30	762	160	49	270	82
	AEW3345*S4ATA	391,883	114,850	393,278	115,258	3	30,150	51,225	30	762	180	55	300	91

Notes:

* = Electrical Code Designator, D = 460V, E = 575V (see Nomenclature for details)

PERFORMANCE DATA

Selection Capacity: Air Defrost - 60 Hz

Washdown Motors														
Model	Selection Capacity				Fan Data						Air Throw			
	R-404A/R-507A		R-407A/R-407F		No. of Fans	Air Volume		Diameter		Standard		With Collar		
	10°F TD 25°F SST 80% RH	6°C TD -4°C SST 80% RH	10°F TD 25°F SST 80% RH	6°C TD -4°C SST 80% RH		CFM	m³H	in	mm	ft	m	ft	m	
	BTUH	Watts	BTUH	Watts										
6 Fins Per Inch	AEW0975*S6AWA	66,433	19,470	104,737	30,695	1	7,540	12,811	30	762	130	40	230	70
	AEW1160*S6AWA	75,896	22,243	123,628	36,232	1	7,540	12,811	30	762	130	40	230	70
	AEW1970*S6AWA	134,195	39,329	212,100	62,160	2	15,080	25,621	30	762	130	40	230	70
	AEW2375*S6AWA	155,729	45,640	254,105	74,471	2	15,080	25,621	30	762	130	40	230	70
	AEW2935*S6AWA	198,623	58,211	318,193	93,253	3	22,620	38,432	30	762	130	40	230	70
	AEW3485*S6AWA	229,288	67,198	378,360	110,886	3	22,620	38,432	30	762	130	40	230	70
4 Fins Per Inch	AEW0780*S4AWA	57,195	16,762	85,325	25,006	1	7,540	12,811	30	762	130	40	230	70
	AEW0950*S4AWA	64,762	18,980	102,943	30,170	1	7,540	12,811	30	762	130	40	230	70
	AEW1570*S4AWA	93,373	27,365	172,599	50,584	2	15,080	25,621	30	762	130	40	230	70
	AEW1940*S4AWA	132,769	38,911	211,415	61,960	2	15,080	25,621	30	762	130	40	230	70
	AEW2335*S4AWA	140,981	41,317	263,259	77,153	3	22,620	38,432	30	762	130	40	230	70
	AEW2845*S4AWA	198,247	58,101	318,941	93,472	3	22,620	38,432	30	762	130	40	230	70

Notes:

* = Electrical Code Designator (see Nomenclature for details)

PERFORMANCE DATA

Selection Capacity: Air Defrost - 60 Hz

Washdown Motors														
Model	Selection Capacity				No. of Fans	Fan Data				Air Throw				
	R-407C		R-448A/R-449A			Air Volume		Diameter		Standard		With Collar		
	10°F TD 25°F SST 80% RH	6°C TD -4°C SST 80% RH	10°F TD 25°F SST 80% RH	6°C TD -4°C SST 80% RH		CFM	m ³ H	in	mm	ft	m	ft	m	
	BTUH	Watts	BTUH	Watts										
6 Fins Per Inch	AEW0975*S6AWA	109,643	32,133	107,658	31,552	1	7,540	12,811	30	762	130	40	230	70
	AEW1160*S6AWA	129,288	37,890	125,978	36,920	1	7,540	12,811	30	762	130	40	230	70
	AEW1970*S6AWA	221,805	65,005	217,722	63,808	2	15,080	25,621	30	762	130	40	230	70
	AEW2375*S6AWA	261,293	76,577	254,684	74,640	2	15,080	25,621	30	762	130	40	230	70
	AEW2935*S6AWA	324,559	95,119	335,289	98,264	3	22,620	38,432	30	762	130	40	230	70
	AEW3485*S6AWA	392,357	114,988	397,503	116,497	3	22,620	38,432	30	762	130	40	230	70
4 Fins Per Inch	AEW0780*S4AWA	89,390	26,198	86,652	25,395	1	7,540	12,811	30	762	130	40	230	70
	AEW0950*S4AWA	107,772	31,585	103,843	30,433	1	7,540	12,811	30	762	130	40	230	70
	AEW1570*S4AWA	180,601	52,929	175,019	51,293	2	15,080	25,621	30	762	130	40	230	70
	AEW1940*S4AWA	217,595	63,771	209,674	61,449	2	15,080	25,621	30	762	130	40	230	70
	AEW2335*S4AWA	271,100	79,452	272,496	79,861	3	22,620	38,432	30	762	130	40	230	70
	AEW2845*S4AWA	333,101	97,622	334,286	97,970	3	22,620	38,432	30	762	130	40	230	70

Notes:

* = Electrical Code Designator (see Nomenclature for details)

PERFORMANCE DATA – CO₂

Selection Capacity: Air Defrost - 60 Hz

Totally Enclosed and Variable Speed Motors												
Model	Selection Capacity		Fan Data				Air Throw					
	R-744 (CO ₂)		No. of Fans	Air Volume		Diameter		Standard		With Collar		
	10°F TD 80% RH	25°F SST 80% RH		6°C TD	-4°C SST 80% RH	in	mm	ft	m	ft	m	
	BTUH	Watts	CFM	m ³ H								
6 Fins Per Inch	AEW0850CC6ATA	79,514	23,303	1	9,060	15,393	30	762	160	49	270	82
	AEW0850*C6ATA	84,589	24,791	1	10,050	17,075	30	762	180	55	300	91
	AEW0970CC6ATA	90,868	26,631	1	9,060	15,393	30	762	160	49	270	82
	AEW0970*C6ATA	96,668	28,331	1	10,050	17,075	30	762	180	55	300	91
	AEW1705CC6ATA	159,830	46,842	2	18,120	30,786	30	762	160	49	270	82
	AEW1705*C6ATA	170,032	49,831	2	20,100	34,150	30	762	180	55	300	91
	AEW1940CC6ATA	182,220	53,403	2	18,120	30,786	30	762	160	49	270	82
	AEW1940*C6ATA	193,851	56,812	2	20,100	34,150	30	762	180	55	300	91
	AEW2575CC6ATA	241,845	70,878	3	27,180	46,179	30	762	160	49	270	82
	AEW2575*C6ATA	257,282	75,402	3	30,150	51,225	30	762	180	55	300	91
	AEW2950CC6ATA	276,892	81,149	3	27,180	46,179	30	762	160	49	270	82
	AEW2950*C6ATA	294,566	86,329	3	30,150	51,225	30	762	180	55	300	91
4 Fins Per Inch	AEW0705CC4ATA	65,881	19,308	1	9,060	15,393	30	762	160	49	270	82
	AEW0705*C4ATA	70,086	20,540	1	10,050	17,075	30	762	180	55	300	91
	AEW0830CC4ATA	77,903	22,831	1	9,060	15,393	30	762	160	49	270	82
	AEW0830*C4ATA	82,875	24,288	1	10,050	17,075	30	762	180	55	300	91
	AEW1425CC4ATA	133,525	39,132	2	18,120	30,786	30	762	160	49	270	82
	AEW1425*C4ATA	142,048	41,630	2	20,100	34,150	30	762	180	55	300	91
	AEW1655CC4ATA	155,470	45,564	2	18,120	30,786	30	762	160	49	270	82
	AEW1655*C4ATA	165,394	48,472	2	20,100	34,150	30	762	180	55	300	91
	AEW2135CC4ATA	200,667	58,810	3	27,180	46,179	30	762	160	49	270	82
	AEW2135*C4ATA	213,476	62,564	3	30,150	51,225	30	762	180	55	300	91
	AEW2535CC4ATA	238,061	69,769	3	27,180	46,179	30	762	160	49	270	82
	AEW2535*C4ATA	253,256	74,222	3	30,150	51,225	30	762	180	55	300	91

Notes:

* = Electrical Code Designator, D = 460V, E = 575V (see Nomenclature for details)

PERFORMANCE DATA – CO₂

Selection Capacity: Air Defrost - 60 Hz

Washdown Motors												
Model	Selection Capacity			Fan Data					Air Throw			
	R-744 (CO ₂)			No. of Fans	Air Volume		Diameter		Standard		With Collar	
	10°F TD 80% RH	25°F SST	6°C TD 80% RH		CFM	m ³ H	in	mm	ft	m	ft	m
	BTUH		Watts									
6 Fins Per Inch	AEW0720*C6AWA	71,901	21,072	1	7,540	12,811	30	762	130	40	230	70
	AEW0825*C6AWA	82,168	24,081	1	7,540	12,811	30	762	130	40	230	70
	AEW1450*C6AWA	144,527	42,357	2	15,080	25,621	30	762	130	40	230	70
	AEW1650*C6AWA	164,773	48,290	2	15,080	25,621	30	762	130	40	230	70
	AEW2190*C6AWA	218,690	64,092	3	22,620	38,432	30	762	130	40	230	70
	AEW2505*C6AWA	250,381	73,379	3	22,620	38,432	30	762	130	40	230	70
4 Fins Per Inch	AEW0600*C4AWA	59,573	17,459	1	7,540	12,811	30	762	130	40	230	70
	AEW0705*C4AWA	70,444	20,645	1	7,540	12,811	30	762	130	40	230	70
	AEW1210*C4AWA	120,741	35,386	2	15,080	25,621	30	762	130	40	230	70
	AEW1410*C4AWA	140,585	41,201	2	15,080	25,621	30	762	130	40	230	70
	AEW1815*C4AWA	181,455	53,179	3	22,620	38,432	30	762	130	40	230	70
	AEW2155*C4AWA	215,268	63,089	3	22,620	38,432	30	762	130	40	230	70

Notes:

* = Electrical Code Designator (see Nomenclature for details)

SPECIFICATIONS

Air Defrost - 60 Hz

Model		No. of Motors	Totally Enclosed and Variable Speed Motors								
			208-230/3/60			460/3/60			575/3/60		
Standard Refrigerants	CO ₂		Motor HP	Motor Amps	Motor Watts	Motor HP	Motor Amps	Motor Watts	Motor HP	Motor Amps	Motor Watts
AEW0915*S4ATA	AEW0705*C4ATA	1	3	9.8	2,538	3	4.9	2,538	3	3.6	2,581
AEW1115*S4ATA	AEW0830*C4ATA	1	3	9.8	2,538	3	4.9	2,538	3	3.6	2,581
AEW1150*S6ATA	AEW0850*C6ATA	1	3	9.8	2,538	3	4.9	2,538	3	3.6	2,581
AEW1365*S6ATA	AEW0970*C6ATA	1	3	9.8	2,538	3	4.9	2,538	3	3.6	2,581
AEW1845*S4ATA	AEW1425*C4ATA	2	3	19.6	5,075	3	9.8	5,075	3	7.2	5,163
AEW2280*S4ATA	AEW1655*C4ATA	2	3	19.6	5,075	3	9.8	5,075	3	7.2	5,163
AEW2320*S6ATA	AEW1705*C6ATA	2	3	19.6	5,075	3	9.8	5,075	3	7.2	5,163
AEW2795*S6ATA	AEW1940*C6ATA	2	3	19.6	5,075	3	9.8	5,075	3	7.2	5,163
AEW2745*S4ATA	AEW2135*C4ATA	3	3	29.4	7,613	3	14.7	7,613	3	10.8	7,744
AEW3345*S4ATA	AEW2535*C4ATA	3	3	29.4	7,613	3	14.7	7,613	3	10.8	7,744
AEW3455*S6ATA	AEW2575*C6ATA	3	3	29.4	7,613	3	14.7	7,613	3	10.8	7,744
AEW4100*S6ATA	AEW2950*C6ATA	3	3	29.4	7,613	3	14.7	7,613	3	10.8	7,744

Model		No. of Motors	Washdown Motors								
			208-230/3/60			460/3/60			575/3/60		
Standard Refrigerants	CO ₂		Motor HP	Motor Amps	Motor Watts	Motor HP	Motor Amps	Motor Watts	Motor HP	Motor Amps	Motor Watts
AEW0780*S4AWA	AEW0600*C4AWA	1	1-3/4	6.5	1,683	1-3/4	3.3	1,709	1-3/4	2.7	1,721
AEW0950*S4AWA	AEW0705*C4AWA	1	1-3/4	6.5	1,683	1-3/4	3.3	1,709	1-3/4	2.7	1,721
AEW0975*S6AWA	AEW0720*C6AWA	1	1-3/4	6.5	1,683	1-3/4	3.3	1,709	1-3/4	2.7	1,721
AEW1160*S6AWA	AEW0825*C6AWA	1	1-3/4	6.5	1,683	1-3/4	3.3	1,709	1-3/4	2.7	1,721
AEW1570*S4AWA	AEW1210*C4AWA	2	1-3/4	13.0	3,366	1-3/4	6.6	3,418	1-3/4	5.4	3,442
AEW1940*S4AWA	AEW1410*C4AWA	2	1-3/4	13.0	3,366	1-3/4	6.6	3,418	1-3/4	5.4	3,442
AEW1970*S6AWA	AEW1450*C6AWA	2	1-3/4	13.0	3,366	1-3/4	6.6	3,418	1-3/4	5.4	3,442
AEW2375*S6AWA	AEW1650*C6AWA	2	1-3/4	13.0	3,366	1-3/4	6.6	3,418	1-3/4	5.4	3,442
AEW2335*S4AWA	AEW1815*C4AWA	3	1-3/4	19.5	5,049	1-3/4	9.9	5,127	1-3/4	8.1	5,163
AEW2845*S4AWA	AEW2155*C4AWA	3	1-3/4	19.5	5,049	1-3/4	9.9	5,127	1-3/4	8.1	5,163
AEW2935*S6AWA	AEW2190*C6AWA	3	1-3/4	19.5	5,049	1-3/4	9.9	5,127	1-3/4	8.1	5,163
AEW3485*S6AWA	AEW2505*C6AWA	3	1-3/4	19.5	5,049	1-3/4	9.9	5,127	1-3/4	8.1	5,163

Notes:

* = Electrical Code Designator (see Nomenclature for details)

PERFORMANCE DATA

Selection Capacity: Low Temp Electric Defrost - 60 Hz

Totally Enclosed and Variable Speed Motors														
Model	Selection Capacity				Fan Data					Air Throw				
	R-404A/R-507A		R-407A/R-407F											
	10°F TD -20°F SST <50% RH	6°C TD -29°C SST <50% RH	10°F TD -20°F SST <50% RH	6°C TD -29°C SST <50% RH	No. of Fans	Air Volume		Diameter		Standard		With Collar		
	BTUH	Watts	BTUH	Watts		CFM	m ³ H	in	mm	ft	m	ft	m	
4 Fins Per Inch	AEW0630CS4ETA	44,673	13,092	62,612	18,350	1	9,060	15,393	30	762	160	49	270	82
	AEW0630*S4ETA	47,524	13,928	66,608	19,521	1	10,050	17,075	30	762	180	55	300	91
	AEW0775CS4ETA	53,730	15,747	76,002	22,274	1	9,060	15,393	30	762	160	49	270	82
	AEW0775*S4ETA	57,160	16,752	80,853	23,696	1	10,050	17,075	30	762	180	55	300	91
	AEW1275CS4ETA	90,220	26,441	126,777	37,155	2	18,120	30,786	30	762	160	49	270	82
	AEW1275*S4ETA	95,979	28,129	134,869	39,526	2	20,100	34,150	30	762	180	55	300	91
	AEW1555CS4ETA	108,615	31,832	153,839	45,086	2	18,120	30,786	30	762	160	49	270	82
	AEW1555*S4ETA	115,548	33,864	163,658	47,963	2	20,100	34,150	30	762	180	55	300	91
	AEW1925CS4ETA	127,057	37,237	180,410	52,873	3	27,180	46,179	30	762	160	49	270	82
	AEW1925*S4ETA	135,167	39,614	191,926	56,248	3	30,150	51,225	30	762	180	55	300	91
	AEW2375CS4ETA	154,411	45,253	224,271	65,727	3	27,180	46,179	30	762	160	49	270	82
	AEW2375*S4ETA	164,267	48,142	238,586	69,923	3	30,150	51,225	30	762	180	55	300	91
3 Fins Per Inch	AEW0555CS3ETA	39,961	11,711	55,503	16,266	1	9,060	15,393	30	762	160	49	270	82
	AEW0555*S3ETA	42,512	12,459	59,046	17,305	1	10,050	17,075	30	762	180	55	300	91
	AEW0685CS3ETA	47,978	14,061	68,205	19,989	1	9,060	15,393	30	762	160	49	270	82
	AEW0685*S3ETA	51,040	14,958	72,558	21,265	1	10,050	17,075	30	762	180	55	300	91
	AEW1120CS3ETA	80,600	23,622	112,154	32,869	2	18,120	30,786	30	762	160	49	270	82
	AEW1120*S3ETA	85,745	25,129	119,313	34,967	2	20,100	34,150	30	762	180	55	300	91
	AEW1360CS3ETA	97,145	28,470	137,882	40,409	2	18,120	30,786	30	762	160	49	270	82
	AEW1360*S3ETA	103,346	30,288	146,683	42,989	2	20,100	34,150	30	762	180	55	300	91
	AEW1685CS3ETA	116,106	34,027	163,686	47,972	3	27,180	46,179	30	762	160	49	270	82
	AEW1685*S3ETA	123,517	36,199	174,134	51,034	3	30,150	51,225	30	762	180	55	300	91
	AEW2110CS3ETA	142,970	41,900	205,205	60,140	3	27,180	46,179	30	762	160	49	270	82
	AEW2110*S3ETA	152,096	44,575	218,303	63,978	3	30,150	51,225	30	762	180	55	300	91

Notes:

* = Electrical Code Designator, D = 460V, E = 575V (see Nomenclature for details)

PERFORMANCE DATA

Selection Capacity: Low Temp Electric Defrost - 60 Hz

Totally Enclosed and Variable Speed Motors														
Model	Selection Capacity				Fan Data						Air Throw			
	R-407C		R-448A/R-449A		No. of Fans	Air Volume		Diameter		Standard		With Collar		
	10°F TD -20°F SST <50% RH	6°C TD -29°C SST <50% RH	10°F TD -20°F SST <50% RH	6°C TD -29°C SST <50% RH		CFM	m³H	in	mm	ft	m	ft	m	
	BTUH	Watts	BTUH	Watts										
4 Fins Per Inch	AEW0630CS4ETA	59,069	17,311	65,526	19,204	1	9,060	15,393	30	762	160	49	270	82
	AEW0630*S4ETA	62,839	18,416	69,709	20,430	1	10,050	17,075	30	762	180	55	300	91
	AEW0775CS4ETA	71,916	21,076	79,143	23,195	1	9,060	15,393	30	762	160	49	270	82
	AEW0775*S4ETA	76,506	22,422	84,195	24,675	1	10,050	17,075	30	762	180	55	300	91
	AEW1275CS4ETA	119,676	35,074	132,722	38,897	2	18,120	30,786	30	762	160	49	270	82
	AEW1275*S4ETA	127,315	37,312	141,194	41,380	2	20,100	34,150	30	762	180	55	300	91
	AEW1555CS4ETA	145,589	42,668	160,267	46,970	2	18,120	30,786	30	762	160	49	270	82
	AEW1555*S4ETA	154,882	45,391	170,497	49,968	2	20,100	34,150	30	762	180	55	300	91
	AEW1925CS4ETA	162,008	47,480	188,987	55,387	3	27,180	46,179	30	762	160	49	270	82
	AEW1925*S4ETA	172,349	50,511	201,050	58,922	3	30,150	51,225	30	762	180	55	300	91
	AEW2375CS4ETA	202,897	59,463	233,241	68,356	3	27,180	46,179	30	762	160	49	270	82
	AEW2375*S4ETA	215,848	63,259	248,129	72,719	3	30,150	51,225	30	762	180	55	300	91
3 Fins Per Inch	AEW0555CS3ETA	52,647	15,429	57,720	16,916	1	9,060	15,393	30	762	160	49	270	82
	AEW0555*S3ETA	56,007	16,414	61,404	17,996	1	10,050	17,075	30	762	180	55	300	91
	AEW0685CS3ETA	64,752	18,977	70,674	20,712	1	9,060	15,393	30	762	160	49	270	82
	AEW0685*S3ETA	68,885	20,188	75,185	22,035	1	10,050	17,075	30	762	180	55	300	91
	AEW1120CS3ETA	106,430	31,191	116,678	34,195	2	18,120	30,786	30	762	160	49	270	82
	AEW1120*S3ETA	113,223	33,182	124,126	36,378	2	20,100	34,150	30	762	180	55	300	91
	AEW1360CS3ETA	130,836	38,344	142,849	41,865	2	18,120	30,786	30	762	160	49	270	82
	AEW1360*S3ETA	139,187	40,792	151,967	44,537	2	20,100	34,150	30	762	180	55	300	91
	AEW1685CS3ETA	148,868	43,629	168,212	49,298	3	27,180	46,179	30	762	160	49	270	82
	AEW1685*S3ETA	158,370	46,414	178,949	52,445	3	30,150	51,225	30	762	180	55	300	91
AEW2110CS3ETA	187,387	54,918	208,069	60,979	3	27,180	46,179	30	762	160	49	270	82	
AEW2110*S3ETA	199,348	58,423	221,350	64,871	3	30,150	51,225	30	762	180	55	300	91	

Notes:

* = Electrical Code Designator, D = 460V, E = 575V (see Nomenclature for details)

PERFORMANCE DATA – CO₂

Selection Capacity: Low Temp Electric Defrost - 60 Hz

Totally Enclosed and Variable Speed Motors												
Model	Selection Capacity		Fan Data				Air Throw					
	R-744 (CO ₂)		No. of Fans	Air Volume		Diameter		Standard		With Collar		
	10°F TD <50% RH	-20°F SST <50% RH		6°C TD <50% RH	-29°C SST <50% RH	CFM	m ³ H	in	mm	ft	m	ft
	BTUH	Watts										
4 Fins Per Inch	AEW0640CC4ETA	59,915	17,559	1	9,060	15,393	30	762	160	49	270	82
	AEW0640*C4ETA	63,739	18,680	1	10,050	17,075	30	762	180	55	300	91
	AEW0765CC4ETA	71,718	21,019	1	9,060	15,393	30	762	160	49	270	82
	AEW0765*C4ETA	76,296	22,360	1	10,050	17,075	30	762	180	55	300	91
	AEW1285CC4ETA	120,406	35,288	2	18,120	30,786	30	762	160	49	270	82
	AEW1285*C4ETA	128,092	37,540	2	20,100	34,150	30	762	180	55	300	91
	AEW1535CC4ETA	143,949	42,187	2	18,120	30,786	30	762	160	49	270	82
	AEW1535*C4ETA	153,137	44,880	2	20,100	34,150	30	762	180	55	300	91
	AEW1905CC4ETA	178,845	52,414	3	27,180	46,179	30	762	160	49	270	82
	AEW1905*C4ETA	190,261	55,760	3	30,150	51,225	30	762	180	55	300	91
	AEW2240CC4ETA	210,529	61,700	3	27,180	46,179	30	762	160	49	270	82
	AEW2240*C4ETA	223,967	65,638	3	30,150	51,225	30	762	180	55	300	91
3 Fins Per Inch	AEW0580CC3ETA	54,195	15,883	1	9,060	15,393	30	762	160	49	270	82
	AEW0580*C3ETA	57,654	16,897	1	10,050	17,075	30	762	180	55	300	91
	AEW0710CC3ETA	66,740	19,560	1	9,060	15,393	30	762	160	49	270	82
	AEW0710*C3ETA	71,000	20,808	1	10,050	17,075	30	762	180	55	300	91
	AEW1160CC3ETA	108,796	31,885	2	18,120	30,786	30	762	160	49	270	82
	AEW1160*C3ETA	115,740	33,920	2	20,100	34,150	30	762	180	55	300	91
	AEW1410CC3ETA	132,499	38,832	2	18,120	30,786	30	762	160	49	270	82
	AEW1410*C3ETA	140,956	41,310	2	20,100	34,150	30	762	180	55	300	91
	AEW1730CC3ETA	162,456	47,611	3	27,180	46,179	30	762	160	49	270	82
	AEW1730*C3ETA	172,825	50,650	3	30,150	51,225	30	762	180	55	300	91
	AEW2075CC3ETA	194,637	57,043	3	27,180	46,179	30	762	160	49	270	82
	AEW2075*C3ETA	207,061	60,684	3	30,150	51,225	30	762	180	55	300	91

Notes:

* = Electrical Code Designator, D = 460V, E = 575V (see Nomenclature for details)

PERFORMANCE DATA

Selection Capacity: Medium Temp Electric Defrost - 60 Hz

Totally Enclosed and Variable Speed Motors														
Model	Selection Capacity				No. of Fans	Fan Data				Air Throw				
	R-404A/R-507A		R-407A/R-407F			Air Volume		Diameter		Standard		With Collar		
	10°F TD 25°F SST 80% RH	6°C TD -4°C SST 80% RH	10°F TD 25°F SST 80% RH	6°C TD -4°C SST 80% RH		CFM	m ³ H	in	mm	ft	m	ft	m	
	BTUH	Watts	BTUH	Watts										
4 Fins Per Inch	AEW0630CS4ETA	63,251	18,537	94,359	27,654	1	9,060	15,393	30	762	160	49	270	82
	AEW0630*S4ETA	67,288	19,720	100,382	29,419	1	10,050	17,075	30	762	180	55	300	91
	AEW0775CS4ETA	71,620	20,990	113,842	33,364	1	9,060	15,393	30	762	160	49	270	82
	AEW0775*S4ETA	76,191	22,329	121,109	35,494	1	10,050	17,075	30	762	180	55	300	91
	AEW1275CS4ETA	103,260	30,263	190,875	55,940	2	18,120	30,786	30	762	160	49	270	82
	AEW1275*S4ETA	109,851	32,194	203,058	59,510	2	20,100	34,150	30	762	180	55	300	91
	AEW1555CS4ETA	146,827	43,031	233,801	68,520	2	18,120	30,786	30	762	160	49	270	82
	AEW1555*S4ETA	156,199	45,777	248,724	72,894	2	20,100	34,150	30	762	180	55	300	91
	AEW1925CS4ETA	155,908	45,692	291,133	85,323	3	27,180	46,179	30	762	160	49	270	82
	AEW1925*S4ETA	165,860	48,609	309,716	90,769	3	30,150	51,225	30	762	180	55	300	91
	AEW2375CS4ETA	219,238	64,252	352,712	103,370	3	27,180	46,179	30	762	160	49	270	82
	AEW2375*S4ETA	233,232	68,354	375,225	109,968	3	30,150	51,225	30	762	180	55	300	91
3 Fins Per Inch	AEW0555CS3ETA	58,670	17,195	82,731	24,246	1	9,060	15,393	30	762	160	49	270	82
	AEW0555*S3ETA	62,415	18,292	88,012	25,794	1	10,050	17,075	30	762	180	55	300	91
	AEW0685CS3ETA	65,699	19,255	101,298	29,688	1	9,060	15,393	30	762	160	49	270	82
	AEW0685*S3ETA	69,893	20,484	107,764	31,583	1	10,050	17,075	30	762	180	55	300	91
	AEW1120CS3ETA	115,882	33,962	167,230	49,010	2	18,120	30,786	30	762	160	49	270	82
	AEW1120*S3ETA	123,279	36,130	177,904	52,139	2	20,100	34,150	30	762	180	55	300	91
	AEW1360CS3ETA	132,684	38,886	207,923	60,936	2	18,120	30,786	30	762	160	49	270	82
	AEW1360*S3ETA	141,153	41,368	221,195	64,826	2	20,100	34,150	30	762	180	55	300	91
	AEW1685CS3ETA	139,009	40,740	257,761	75,542	3	27,180	46,179	30	762	160	49	270	82
	AEW1685*S3ETA	147,882	43,340	274,214	80,364	3	30,150	51,225	30	762	180	55	300	91
	AEW2110CS3ETA	200,421	58,738	316,161	92,658	3	27,180	46,179	30	762	160	49	270	82
	AEW2110*S3ETA	213,214	62,487	336,342	98,572	3	30,150	51,225	30	762	180	55	300	91

Notes:

* = Electrical Code Designator, D = 460V, E = 575V (see Nomenclature for details)

PERFORMANCE DATA

Selection Capacity: Medium Temp Electric Defrost - 60 Hz

Totally Enclosed and Variable Speed Motors														
Model	Selection Capacity				Fan Data						Air Throw			
	R-407C		R-448A/R-449A											
	10°F TD 25°F SST 80% RH	6°C TD -4°C SST 80% RH	10°F TD 25°F SST 80% RH	6°C TD -4°C SST 80% RH										
	BTUH	Watts	BTUH	Watts	No. of Fans	Air Volume		Diameter		Standard		With Collar		
				CFM		m ³ H	in	mm	ft	m	ft	m		
4 Fins Per Inch	AEW0630CS4ETA	98,855	28,972	95,826	28,084	1	9,060	15,393	30	762	160	49	270	82
	AEW0630*S4ETA	105,165	30,821	101,943	29,877	1	10,050	17,075	30	762	180	55	300	91
	AEW0775CS4ETA	119,184	34,929	114,838	33,656	1	9,060	15,393	30	762	160	49	270	82
	AEW0775*S4ETA	126,791	37,159	122,168	35,804	1	10,050	17,075	30	762	180	55	300	91
	AEW1275CS4ETA	199,724	58,533	193,551	56,724	2	18,120	30,786	30	762	160	49	270	82
	AEW1275*S4ETA	212,472	62,269	205,905	60,345	2	20,100	34,150	30	762	180	55	300	91
	AEW1555CS4ETA	240,634	70,523	231,875	67,956	2	18,120	30,786	30	762	160	49	270	82
	AEW1555*S4ETA	255,994	75,024	246,675	72,293	2	20,100	34,150	30	762	180	55	300	91
	AEW1925CS4ETA	299,805	87,864	301,349	88,317	3	27,180	46,179	30	762	160	49	270	82
	AEW1925*S4ETA	318,941	93,472	320,584	93,954	3	30,150	51,225	30	762	180	55	300	91
	AEW2375CS4ETA	368,370	107,959	369,681	108,343	3	27,180	46,179	30	762	160	49	270	82
	AEW2375*S4ETA	391,883	114,850	393,278	115,258	3	30,150	51,225	30	762	180	55	300	91
3 Fins Per Inch	AEW0555CS3ETA	86,689	25,406	83,350	24,427	1	9,060	15,393	30	762	160	49	270	82
	AEW0555*S3ETA	92,222	27,028	88,670	25,987	1	10,050	17,075	30	762	180	55	300	91
	AEW0685CS3ETA	106,089	31,092	101,566	29,766	1	9,060	15,393	30	762	160	49	270	82
	AEW0685*S3ETA	112,861	33,076	108,049	31,666	1	10,050	17,075	30	762	180	55	300	91
	AEW1120CS3ETA	175,017	51,292	168,210	49,298	2	18,120	30,786	30	762	160	49	270	82
	AEW1120*S3ETA	186,188	54,566	178,947	52,444	2	20,100	34,150	30	762	180	55	300	91
	AEW1360CS3ETA	214,059	62,734	204,910	60,053	2	18,120	30,786	30	762	160	49	270	82
	AEW1360*S3ETA	227,722	66,739	217,989	63,886	2	20,100	34,150	30	762	180	55	300	91
	AEW1685CS3ETA	267,062	78,268	263,737	77,294	3	27,180	46,179	30	762	160	49	270	82
	AEW1685*S3ETA	284,109	83,264	280,571	82,227	3	30,150	51,225	30	762	180	55	300	91
AEW2110CS3ETA	331,871	97,262	327,020	95,840	3	27,180	46,179	30	762	160	49	270	82	
AEW2110*S3ETA	353,054	103,470	347,894	101,958	3	30,150	51,225	30	762	180	55	300	91	

Notes:

* = Electrical Code Designator, D = 460V, E = 575V (see Nomenclature for details)

PERFORMANCE DATA – CO₂

Selection Capacity: Medium Temp Electric Defrost - 60 Hz

Totally Enclosed and Variable Speed Motors													
Model	Selection Capacity				Fan Data				Air Throw				
	R-744 (CO ₂)				No. of Fans	Air Volume		Diameter		Standard		With Collar	
	10°F TD 80% RH	25°F SST 80% RH	6°C TD 80% RH	-4°C SST 80% RH		CFM	m ³ H	in	mm	ft	m	ft	m
	BTUH	Watts											
4 Fins Per Inch	AEW0640CC4ETA	65,881		19,308	1	9,060	15,393	30	762	160	49	270	82
	AEW0640*C4ETA	70,086		20,540	1	10,050	17,075	30	762	180	55	300	91
	AEW0765CC4ETA	77,903		22,831	1	9,060	15,393	30	762	160	49	270	82
	AEW0765*C4ETA	82,875		24,288	1	10,050	17,075	30	762	180	55	300	91
	AEW1285CC4ETA	133,525		39,132	2	18,120	30,786	30	762	160	49	270	82
	AEW1285*C4ETA	142,048		41,630	2	20,100	34,150	30	762	180	55	300	91
	AEW1535CC4ETA	155,470		45,564	2	18,120	30,786	30	762	160	49	270	82
	AEW1535*C4ETA	165,394		48,472	2	20,100	34,150	30	762	180	55	300	91
	AEW1905CC4ETA	200,667		58,810	3	27,180	46,179	30	762	160	49	270	82
	AEW1905*C4ETA	213,476		62,564	3	30,150	51,225	30	762	180	55	300	91
	AEW2240CC4ETA	238,061		69,769	3	27,180	46,179	30	762	160	49	270	82
	AEW2240*C4ETA	253,256		74,222	3	30,150	51,225	30	762	180	55	300	91
3 Fins Per Inch	AEW0580CC3ETA	59,065		17,310	1	9,060	15,393	30	762	160	49	270	82
	AEW0580*C3ETA	62,835		18,415	1	10,050	17,075	30	762	180	55	300	91
	AEW0710CC3ETA	71,420		20,931	1	9,060	15,393	30	762	160	49	270	82
	AEW0710*C3ETA	75,979		22,267	1	10,050	17,075	30	762	180	55	300	91
	AEW1160CC3ETA	120,373		35,278	2	18,120	30,786	30	762	160	49	270	82
	AEW1160*C3ETA	128,056		37,530	2	20,100	34,150	30	762	180	55	300	91
	AEW1410CC3ETA	142,096		41,644	2	18,120	30,786	30	762	160	49	270	82
	AEW1410*C3ETA	151,166		44,302	2	20,100	34,150	30	762	180	55	300	91
	AEW1730CC3ETA	180,079		52,776	3	27,180	46,179	30	762	160	49	270	82
	AEW1730*C3ETA	191,573		56,145	3	30,150	51,225	30	762	180	55	300	91
	AEW2075CC3ETA	218,645		64,079	3	27,180	46,179	30	762	160	49	270	82
	AEW2075*C3ETA	232,601		68,169	3	30,150	51,225	30	762	180	55	300	91

Notes:

* = Electrical Code Designator, D = 460V, E = 575V (see Nomenclature for details)

SPECIFICATIONS

Electric Defrost - 60 Hz

Model		No. of Motors	Totally Enclosed and Variable Speed Motors						Defrost Heaters	
			208-230/3/60						Heater Watts	Heater Amps
Standard Refrigerants	CO ₂		Motor HP	Motor Amps	Motor Watts	Fan Circuit MCA	Fan Circuit MOPD	208-230/3/60		
AEW0555CS3ETA	AEW0580CC3ETA	1	3	9.8	2,538	12.3	35	19,300	48.6	
AEW0630CS4ETA	AEW0640CC4ETA	1	3	9.8	2,538	12.3	35	19,300	48.6	
AEW0685CS3ETA	AEW0710CC3ETA	1	3	9.8	2,538	12.3	35	19,300	48.6	
AEW0775CS4ETA	AEW0765CC4ETA	1	3	9.8	2,538	12.3	35	19,300	48.6	
AEW1120CS3ETA	AEW1160CC3ETA	2	3	19.6	5,075	22.1	45	38,000	95.7	
AEW1275CS4ETA	AEW1285CC4ETA	2	3	19.6	5,075	22.1	45	38,000	95.7	
AEW1360CS3ETA	AEW1410CC3ETA	2	3	19.6	5,075	22.1	45	38,000	95.7	
AEW1555CS4ETA	AEW1535CC4ETA	2	3	19.6	5,075	22.1	45	38,000	95.7	
AEW1685CS3ETA	AEW1730CC3ETA	3	3	29.4	7,613	31.9	50	56,700	142.8	
AEW1925CS4ETA	AEW1905CC4ETA	3	3	29.4	7,613	31.9	50	56,700	142.8	
AEW2110CS3ETA	AEW2075CC3ETA	3	3	29.4	7,613	31.9	50	56,700	142.8	
AEW2375CS4ETA	AEW2240CC4ETA	3	3	29.4	7,613	31.9	50	56,700	142.8	

Model		No. of Motors	Totally Enclosed and Variable Speed Motors						Defrost Heaters	
			460/3/60						Heater Watts	Heater Amps
Standard Refrigerants	CO ₂		Motor HP	Motor Amps	Motor Watts	Fan Circuit MCA	Fan Circuit MOPD	460/3/60		
AEW0555DS3ETA	AEW0580DC3ETA	1	3	4.9	2,538	6.1	20	19,300	24.5	
AEW0630DS4ETA	AEW0640DC4ETA	1	3	4.9	2,538	6.1	20	19,300	24.5	
AEW0685DS3ETA	AEW0710DC3ETA	1	3	4.9	2,538	6.1	20	19,300	24.5	
AEW0775DS4ETA	AEW0765DC4ETA	1	3	4.9	2,538	6.1	20	19,300	24.5	
AEW1120DS3ETA	AEW1160DC3ETA	2	3	9.8	5,075	11.0	25	38,000	48.3	
AEW1275DS4ETA	AEW1285DC4ETA	2	3	9.8	5,075	11.0	25	38,000	48.3	
AEW1360DS3ETA	AEW1410DC3ETA	2	3	9.8	5,075	11.0	25	38,000	48.3	
AEW1555DS4ETA	AEW1535DC4ETA	2	3	9.8	5,075	11.0	25	38,000	48.3	
AEW1685DS3ETA	AEW1730DC3ETA	3	3	14.7	7,613	15.9	25	56,700	72.1	
AEW1925DS4ETA	AEW1905DC4ETA	3	3	14.7	7,613	15.9	25	56,700	72.1	
AEW2110DS3ETA	AEW2075DC3ETA	3	3	14.7	7,613	15.9	25	56,700	72.1	
AEW2375DS4ETA	AEW2240DC4ETA	3	3	14.7	7,613	15.9	25	56,700	72.1	

SPECIFICATIONS

Electric Defrost - 60 Hz

Model		No. of Motors	Totally Enclosed and Variable Speed Motors						Defrost Heaters	
Standard Refrigerants	CO ₂		575/3/60					Heater Watts	Heater Amps	
			Motor HP	Motor Amps	Motor Watts	Fan Circuit MCA	Fan Circuit MOPD		575/3/60	
AEW0555ES3ETA	AEW0580EC3ETA	1	3	3.6	2,581	4.5	15	19,300	19.6	
AEW0630ES4ETA	AEW0640EC4ETA	1	3	3.6	2,581	4.5	15	19,300	19.6	
AEW0685ES3ETA	AEW0710EC3ETA	1	3	3.6	2,581	4.5	15	19,300	19.6	
AEW0775ES4ETA	AEW0765EC4ETA	1	3	3.6	2,581	4.5	15	19,300	19.6	
AEW1120ES3ETA	AEW1160EC3ETA	2	3	7.2	5,163	8.1	15	38,000	38.5	
AEW1275ES4ETA	AEW1285EC4ETA	2	3	7.2	5,163	8.1	15	38,000	38.5	
AEW1360ES3ETA	AEW1410EC3ETA	2	3	7.2	5,163	8.1	15	38,000	38.5	
AEW1555ES4ETA	AEW1535EC4ETA	2	3	7.2	5,163	8.1	15	38,000	38.5	
AEW1685ES3ETA	AEW1730EC3ETA	3	3	10.8	7,744	11.7	20	56,700	57.5	
AEW1925ES4ETA	AEW1905EC4ETA	3	3	10.8	7,744	11.7	20	56,700	57.5	
AEW2110ES3ETA	AEW2075EC3ETA	3	3	10.8	7,744	11.7	20	56,700	57.5	
AEW2375ES4ETA	AEW2240EC4ETA	3	3	10.8	7,744	11.7	20	56,700	57.5	

PERFORMANCE DATA

Selection Capacity: Hot Gas Defrost - 60 Hz

Totally Enclosed and Variable Speed Motors														
Model	Selection Capacity				No. of Fans	Fan Data				Air Throw				
	R-404A/R-507A		R-407A/R-407F			Air Volume		Diameter		Standard		With Collar		
	10°F TD -20°F SST <50% RH	6°C TD -29°C SST <50% RH	10°F TD -20°F SST <50% RH	6°C TD -29°C SST <50% RH		CFM	m ³ H	in	mm	ft	m	ft	m	
	BTUH	Watts	BTUH	Watts										
4 Fins Per Inch	AEW0630CS4HTA	44,673	13,092	62,612	18,350	1	9,060	15,393	30	762	160	49	270	82
	AEW0630*S4HTA	47,524	13,928	66,608	19,521	1	10,050	17,075	30	762	180	55	300	91
	AEW0775CS4HTA	53,730	15,747	76,002	22,274	1	9,060	15,393	30	762	160	49	270	82
	AEW0775*S4HTA	57,160	16,752	80,853	23,696	1	10,050	17,075	30	762	180	55	300	91
	AEW1275CS4HTA	90,220	26,441	126,777	37,155	2	18,120	30,786	30	762	160	49	270	82
	AEW1275*S4HTA	95,979	28,129	134,869	39,526	2	20,100	34,150	30	762	180	55	300	91
	AEW1555CS4HTA	108,615	31,832	153,839	45,086	2	18,120	30,786	30	762	160	49	270	82
	AEW1555*S4HTA	115,548	33,864	163,658	47,963	2	20,100	34,150	30	762	180	55	300	91
	AEW1925CS4HTA	127,057	37,237	180,410	52,873	3	27,180	46,179	30	762	160	49	270	82
	AEW1925*S4HTA	135,167	39,614	191,926	56,248	3	30,150	51,225	30	762	180	55	300	91
	AEW2375CS4HTA	154,411	45,253	224,271	65,727	3	27,180	46,179	30	762	160	49	270	82
	AEW2375*S4HTA	164,267	48,142	238,586	69,923	3	30,150	51,225	30	762	180	55	300	91
3 Fins Per Inch	AEW0555CS3HTA	39,961	11,711	55,503	16,266	1	9,060	15,393	30	762	160	49	270	82
	AEW0555*S3HTA	42,512	12,459	59,046	17,305	1	10,050	17,075	30	762	180	55	300	91
	AEW0685CS3HTA	47,978	14,061	68,205	19,989	1	9,060	15,393	30	762	160	49	270	82
	AEW0685*S3HTA	51,040	14,958	72,558	21,265	1	10,050	17,075	30	762	180	55	300	91
	AEW1120CS3HTA	80,600	23,622	112,154	32,869	2	18,120	30,786	30	762	160	49	270	82
	AEW1120*S3HTA	85,745	25,129	119,313	34,967	2	20,100	34,150	30	762	180	55	300	91
	AEW1360CS3HTA	97,145	28,470	137,882	40,409	2	18,120	30,786	30	762	160	49	270	82
	AEW1360*S3HTA	103,346	30,288	146,683	42,989	2	20,100	34,150	30	762	180	55	300	91
	AEW1685CS3HTA	116,106	34,027	163,686	47,972	3	27,180	46,179	30	762	160	49	270	82
	AEW1685*S3HTA	123,517	36,199	174,134	51,034	3	30,150	51,225	30	762	180	55	300	91
	AEW2110CS3HTA	142,970	41,900	205,205	60,140	3	27,180	46,179	30	762	160	49	270	82
	AEW2110*S3HTA	152,096	44,575	218,303	63,978	3	30,150	51,225	30	762	180	55	300	91

Notes:

* = Electrical Code Designator, D = 460V, E = 575V (see Nomenclature for details)

PERFORMANCE DATA

Selection Capacity: Hot Gas Defrost - 60 Hz

Totally Enclosed and Variable Speed Motors														
Model	Selection Capacity				Fan Data						Air Throw			
	R-407C		R-448A/R-449A		No. of Fans	Air Volume		Diameter		Standard		With Collar		
	10°F TD -20°F SST <50% RH	6°C TD -29°C SST <50% RH	10°F TD -20°F SST <50% RH	6°C TD -29°C SST <50% RH		CFM	m³H	in	mm	ft	m	ft	m	
	BTUH	Watts	BTUH	Watts										
4 Fins Per Inch	AEW0630CS4HTA	59,069	17,311	65,526	19,204	1	9,060	15,393	30	762	160	49	270	82
	AEW0630*S4HTA	62,839	18,416	69,709	20,430	1	10,050	17,075	30	762	180	55	300	91
	AEW0775CS4HTA	71,916	21,076	79,143	23,195	1	9,060	15,393	30	762	160	49	270	82
	AEW0775*S4HTA	76,506	22,422	84,195	24,675	1	10,050	17,075	30	762	180	55	300	91
	AEW1275CS4HTA	119,676	35,074	132,722	38,897	2	18,120	30,786	30	762	160	49	270	82
	AEW1275*S4HTA	127,315	37,312	141,194	41,380	2	20,100	34,150	30	762	180	55	300	91
	AEW1555CS4HTA	145,589	42,668	160,267	46,970	2	18,120	30,786	30	762	160	49	270	82
	AEW1555*S4HTA	154,882	45,391	170,497	49,968	2	20,100	34,150	30	762	180	55	300	91
	AEW1925CS4HTA	162,008	47,480	188,987	55,387	3	27,180	46,179	30	762	160	49	270	82
	AEW1925*S4HTA	172,349	50,511	201,050	58,922	3	30,150	51,225	30	762	180	55	300	91
	AEW2375CS4HTA	202,897	59,463	233,241	68,356	3	27,180	46,179	30	762	160	49	270	82
	AEW2375*S4HTA	215,848	63,259	248,129	72,719	3	30,150	51,225	30	762	180	55	300	91
3 Fins Per Inch	AEW0555CS3HTA	52,647	15,429	57,720	16,916	1	9,060	15,393	30	762	160	49	270	82
	AEW0555*S3HTA	56,007	16,414	61,404	17,996	1	10,050	17,075	30	762	180	55	300	91
	AEW0685CS3HTA	64,752	18,977	70,674	20,712	1	9,060	15,393	30	762	160	49	270	82
	AEW0685*S3HTA	68,885	20,188	75,185	22,035	1	10,050	17,075	30	762	180	55	300	91
	AEW1120CS3HTA	106,430	31,191	116,678	34,195	2	18,120	30,786	30	762	160	49	270	82
	AEW1120*S3HTA	113,223	33,182	124,126	36,378	2	20,100	34,150	30	762	180	55	300	91
	AEW1360CS3HTA	130,836	38,344	142,849	41,865	2	18,120	30,786	30	762	160	49	270	82
	AEW1360*S3HTA	139,187	40,792	151,967	44,537	2	20,100	34,150	30	762	180	55	300	91
	AEW1685CS3HTA	148,868	43,629	168,212	49,298	3	27,180	46,179	30	762	160	49	270	82
	AEW1685*S3HTA	158,370	46,414	178,949	52,445	3	30,150	51,225	30	762	180	55	300	91
	AEW2110CS3HTA	187,387	54,918	208,069	60,979	3	27,180	46,179	30	762	160	49	270	82
	AEW2110*S3HTA	199,348	58,423	221,350	64,871	3	30,150	51,225	30	762	180	55	300	91

Notes:

* = Electrical Code Designator, D = 460V, E = 575V (see Nomenclature for details)

SPECIFICATIONS

Hot Gas Defrost - 60 Hz

Model	No. of Motors	Totally Enclosed and Variable Speed Motors						Drain Pan Heaters	
		208-230/3/60						Heater Amps	
		Motor HP	Motor Amps	Motor Watts	Fan Circuit MCA	Fan Circuit MOPD	Heater Watts	208-230/3/60	
AEW0555CS3HTA	1	3	9.8	2,538	12.3	35	3,900	9.8	
AEW0630CS4HTA	1	3	9.8	2,538	12.3	35	3,900	9.8	
AEW0685CS3HTA	1	3	9.8	2,538	12.3	35	3,900	9.8	
AEW0775CS4HTA	1	3	9.8	2,538	12.3	35	3,900	9.8	
AEW1120CS3HTA	2	3	19.6	5,075	22.1	45	7,200	18.1	
AEW1275CS4HTA	2	3	19.6	5,075	22.1	45	7,200	18.1	
AEW1360CS3HTA	2	3	19.6	5,075	22.1	45	7,200	18.1	
AEW1555CS4HTA	2	3	19.6	5,075	22.1	45	7,200	18.1	
AEW1685CS3HTA	3	3	29.4	7,613	31.9	50	10,500	26.4	
AEW1925CS4HTA	3	3	29.4	7,613	31.9	50	10,500	26.4	
AEW2110CS3HTA	3	3	29.4	7,613	31.9	50	10,500	26.4	
AEW2375CS4HTA	3	3	29.4	7,613	31.9	50	10,500	26.4	

Model	No. of Motors	Totally Enclosed and Variable Speed Motors						Drain Pan Heaters	
		460/3/60						Heater Amps	
		Motor HP	Motor Amps	Motor Watts	Fan Circuit MCA	Fan Circuit MOPD	Heater Watts	460/3/60	
AEW0555DS3HTA	1	3	4.9	2,538	6.1	20	3,900	4.9	
AEW0630DS4HTA	1	3	4.9	2,538	6.1	20	3,900	4.9	
AEW0685DS3HTA	1	3	4.9	2,538	6.1	20	3,900	4.9	
AEW0775DS4HTA	1	3	4.9	2,538	6.1	20	3,900	4.9	
AEW1120DS3HTA	2	3	9.8	5,075	11.0	25	7,200	9.0	
AEW1275DS4HTA	2	3	9.8	5,075	11.0	25	7,200	9.0	
AEW1360DS3HTA	2	3	9.8	5,075	11.0	25	7,200	9.0	
AEW1555DS4HTA	2	3	9.8	5,075	11.0	25	7,200	9.0	
AEW1685DS3HTA	3	3	14.7	7,613	15.9	25	10,500	13.2	
AEW1925DS4HTA	3	3	14.7	7,613	15.9	25	10,500	13.2	
AEW2110DS3HTA	3	3	14.7	7,613	15.9	25	10,500	13.2	
AEW2375DS4HTA	3	3	14.7	7,613	15.9	25	10,500	13.2	

SPECIFICATIONS

Hot Gas Defrost - 60 Hz

Model	No. of Motors	Totally Enclosed and Variable Speed Motors						Drain Pan Heaters	
		575/3/60						Heater Amps	
		Motor HP	Motor Amps	Motor Watts	Fan Circuit MCA	Fan Circuit MOPD	Heater Watts	575/3/60	
AEW0555ES3HTA	1	3	3.6	2,581	4.5	15	3,900	3.9	
AEW0630ES4HTA	1	3	3.6	2,581	4.5	15	3,900	3.9	
AEW0685ES3HTA	1	3	3.6	2,581	4.5	15	3,900	3.9	
AEW0775ES4HTA	1	3	3.6	2,581	4.5	15	3,900	3.9	
AEW1120ES3HTA	2	3	7.2	5,163	8.1	15	7,200	7.2	
AEW1275ES4HTA	2	3	7.2	5,163	8.1	15	7,200	7.2	
AEW1360ES3HTA	2	3	7.2	5,163	8.1	15	7,200	7.2	
AEW1555ES4HTA	2	3	7.2	5,163	8.1	15	7,200	7.2	
AEW1685ES3HTA	3	3	10.8	7,744	11.7	20	10,500	10.5	
AEW1925ES4HTA	3	3	10.8	7,744	11.7	20	10,500	10.5	
AEW2110ES3HTA	3	3	10.8	7,744	11.7	20	10,500	10.5	
AEW2375ES4HTA	3	3	10.8	7,744	11.7	20	10,500	10.5	

PERFORMANCE DATA

Selection Capacity: Air Defrost - 50 Hz

Totally Enclosed and Variable Speed Motors														
Model	Selection Capacity				No. of Fans	Fan Data				Air Throw				
	R-404A/R-507A		R-407A/R-407F			Air Volume		Diameter		Standard		With Collar		
	10°F TD 25°F SST 80% RH	6°C TD -4°C SST 80% RH	10°F TD 25°F SST 80% RH	6°C TD -4°C SST 80% RH		CFM	m ³ H	in	mm	ft	m	ft	m	
	BTUH	Watts	BTUH	Watts										
6 Fins Per Inch	AEW1150XS6ATA	70,341	20,615	110,898	32,501	1	8,380	14,238	30	762	150	46	250	76
	AEW1365XS6ATA	80,360	23,551	130,901	38,363	1	8,380	14,238	30	762	150	46	250	76
	AEW2320XS6ATA	142,089	41,642	224,576	65,817	2	16,760	28,475	30	762	150	46	250	76
	AEW2795XS6ATA	164,890	48,324	269,052	78,851	2	16,760	28,475	30	762	150	46	250	76
	AEW3455XS6ATA	210,307	61,635	336,911	98,739	3	25,140	42,713	30	762	150	46	250	76
	AEW4100XS6ATA	242,776	71,151	400,616	117,409	3	25,140	42,713	30	762	150	46	250	76
4 Fins Per Inch	AEW0915XS4ATA	60,559	17,748	90,344	26,477	1	8,380	14,238	30	762	150	46	250	76
	AEW1115XS4ATA	68,572	20,096	108,998	31,944	1	8,380	14,238	30	762	150	46	250	76
	AEW1845XS4ATA	98,866	28,975	182,752	53,559	2	16,760	28,475	30	762	150	46	250	76
	AEW2280XS4ATA	140,579	41,200	223,852	65,604	2	16,760	28,475	30	762	150	46	250	76
	AEW2745XS4ATA	149,274	43,748	278,744	81,692	3	25,140	42,713	30	762	150	46	250	76
	AEW3345XS4ATA	209,909	61,518	337,703	98,971	3	25,140	42,713	30	762	150	46	250	76

PERFORMANCE DATA

Selection Capacity: Air Defrost - 50 Hz

Totally Enclosed and Variable Speed Motors														
Model	Selection Capacity				Fan Data				Air Throw					
	R-407C		R-448A/R-449A											
	10°F TD 25°F SST 80% RH	6°C TD -4°C SST 80% RH	10°F TD 25°F SST 80% RH	6°C TD -4°C SST 80% RH	No. of Fans	Air Volume		Diameter		Standard		With Collar		
	BTUH	Watts	BTUH	Watts		CFM	m³H	in	mm	ft	m	ft	m	
6 Fins Per Inch	AEW1150XS6ATA	116,093	34,023	113,991	33,408	1	8,380	14,238	30	762	150	46	250	76
	AEW1365XS6ATA	136,893	40,119	133,388	39,092	1	8,380	14,238	30	762	150	46	250	76
	AEW2320XS6ATA	234,852	68,828	230,530	67,562	2	16,760	28,475	30	762	150	46	250	76
	AEW2795XS6ATA	276,663	81,082	269,665	79,031	2	16,760	28,475	30	762	150	46	250	76
	AEW3455XS6ATA	343,651	100,714	355,012	104,044	3	25,140	42,713	30	762	150	46	250	76
	AEW4100XS6ATA	415,436	121,752	420,886	123,349	3	25,140	42,713	30	762	150	46	250	76
4 Fins Per Inch	AEW0915XS4ATA	94,649	27,739	91,749	26,889	1	8,380	14,238	30	762	150	46	250	76
	AEW1115XS4ATA	114,112	33,443	109,951	32,224	1	8,380	14,238	30	762	150	46	250	76
	AEW1845XS4ATA	191,225	56,042	185,315	54,310	2	16,760	28,475	30	762	150	46	250	76
	AEW2280XS4ATA	230,395	67,522	222,008	65,064	2	16,760	28,475	30	762	150	46	250	76
	AEW2745XS4ATA	287,047	84,125	288,526	84,559	3	25,140	42,713	30	762	150	46	250	76
	AEW3345XS4ATA	352,695	103,365	353,950	103,733	3	25,140	42,713	30	762	150	46	250	76

PERFORMANCE DATA

Selection Capacity: Air Defrost - 50 Hz

Washdown Motors														
Model	Selection Capacity				No. of Fans	Fan Data				Air Throw				
	R-404A/R-507A		R-407A/R-407F			Air Volume		Diameter		Standard		With Collar		
	10°F TD 25°F SST 80% RH	6°C TD -4°C SST 80% RH	10°F TD 25°F SST 80% RH	6°C TD -4°C SST 80% RH		CFM	m³H	in	mm	ft	m	ft	m	
	BTUH	Watts	BTUH	Watts										
6 Fins Per Inch	AEW0975XS6AWA	59,399	17,408	93,647	27,445	1	6,280	10,670	30	762	110	34	190	58
	AEW1160XS6AWA	67,860	19,888	110,538	32,396	1	6,280	10,670	30	762	110	34	190	58
	AEW1970XS6AWA	119,987	35,165	189,642	55,579	2	12,560	21,340	30	762	110	34	190	58
	AEW2375XS6AWA	139,240	40,807	227,200	66,586	2	12,560	21,340	30	762	110	34	190	58
	AEW2935XS6AWA	177,592	52,047	284,502	83,379	3	18,840	32,009	30	762	110	34	190	58
	AEW3485XS6AWA	205,011	60,083	338,298	99,145	3	18,840	32,009	30	762	110	34	190	58
4 Fins Per Inch	AEW0780XS4AWA	51,139	14,987	76,290	22,358	1	6,280	10,670	30	762	110	34	190	58
	AEW0950XS4AWA	57,905	16,970	92,043	26,975	1	6,280	10,670	30	762	110	34	190	58
	AEW1570XS4AWA	83,487	24,468	154,324	45,228	2	12,560	21,340	30	762	110	34	190	58
	AEW1940XS4AWA	118,711	34,791	189,030	55,399	2	12,560	21,340	30	762	110	34	190	58
	AEW2335XS4AWA	126,054	36,943	235,384	68,984	3	18,840	32,009	30	762	110	34	190	58
	AEW2845XS4AWA	177,256	51,949	285,171	83,575	3	18,840	32,009	30	762	110	34	190	58

PERFORMANCE DATA

Selection Capacity: Air Defrost - 50 Hz

Washdown Motors														
Model	Selection Capacity				Fan Data						Air Throw			
	R-407C		R-448A/R-449A		No. of Fans	Air Volume		Diameter		Standard		With Collar		
	10°F TD 25°F SST 80% RH	6°C TD -4°C SST 80% RH	10°F TD 25°F SST 80% RH	6°C TD -4°C SST 80% RH		CFM	m³H	in	mm	ft	m	ft	m	
	BTUH	Watts	BTUH	Watts										
6 Fins Per Inch	AEW0975XS6AWA	98,034	28,731	96,259	28,211	1	6,280	10,670	30	762	110	34	190	58
	AEW1160XS6AWA	115,598	33,879	112,639	33,011	1	6,280	10,670	30	762	110	34	190	58
	AEW1970XS6AWA	198,320	58,122	194,669	57,052	2	12,560	21,340	30	762	110	34	190	58
	AEW2375XS6AWA	233,626	68,469	227,717	66,737	2	12,560	21,340	30	762	110	34	190	58
	AEW2935XS6AWA	290,194	85,047	299,788	87,859	3	18,840	32,009	30	762	110	34	190	58
	AEW3485XS6AWA	350,813	102,813	355,415	104,162	3	18,840	32,009	30	762	110	34	190	58
4 Fins Per Inch	AEW0780XS4AWA	79,925	23,424	77,477	22,706	1	6,280	10,670	30	762	110	34	190	58
	AEW0950XS4AWA	96,361	28,241	92,848	27,211	1	6,280	10,670	30	762	110	34	190	58
	AEW1570XS4AWA	161,479	47,325	156,488	45,862	2	12,560	21,340	30	762	110	34	190	58
	AEW1940XS4AWA	194,555	57,019	187,473	54,943	2	12,560	21,340	30	762	110	34	190	58
	AEW2335XS4AWA	242,395	71,039	243,644	71,405	3	18,840	32,009	30	762	110	34	190	58
	AEW2845XS4AWA	297,831	87,286	298,891	87,596	3	18,840	32,009	30	762	110	34	190	58

PERFORMANCE DATA – CO₂

Selection Capacity: Air Defrost - 50 Hz

Totally Enclosed and Variable Speed Motors													
Model	Selection Capacity			Fan Data					Air Throw				
	R-744 (CO ₂)			No. of Fans	Air Volume		Diameter		Standard		With Collar		
	10°F TD 80% RH	25°F SST	6°C TD 80% RH		CFM	m ³ H	in	mm	ft	m	ft	m	
	BTUH		Watts										
6 Fins Per Inch	AEW0850XC6ATA	76,130		22,312	1	8,380	14,238	30	762	150	46	250	76
	AEW0970XC6ATA	87,001		25,498	1	8,380	14,238	30	762	150	46	250	76
	AEW1705XC6ATA	153,029		44,848	2	16,760	28,475	30	762	150	46	250	76
	AEW1940XC6ATA	174,466		51,131	2	16,760	28,475	30	762	150	46	250	76
	AEW2575XC6ATA	231,554		67,862	3	25,140	42,713	30	762	150	46	250	76
	AEW2950XC6ATA	265,109		77,696	3	25,140	42,713	30	762	150	46	250	76
4 Fins Per Inch	AEW0705XC4ATA	63,077		18,486	1	8,380	14,238	30	762	150	46	250	76
	AEW0830XC4ATA	74,588		21,859	1	8,380	14,238	30	762	150	46	250	76
	AEW1425XC4ATA	127,843		37,467	2	16,760	28,475	30	762	150	46	250	76
	AEW1655XC4ATA	148,855		43,625	2	16,760	28,475	30	762	150	46	250	76
	AEW2135XC4ATA	192,128		56,307	3	25,140	42,713	30	762	150	46	250	76
	AEW2535XC4ATA	227,930		66,800	3	25,140	42,713	30	762	150	46	250	76

PERFORMANCE DATA – CO₂

Selection Capacity: Air Defrost - 50 Hz

Washdown Motors													
Model	Selection Capacity			Fan Data					Air Throw				
	R-744 (CO ₂)			No. of Fans	Air Volume		Diameter		Standard		With Collar		
	10°F TD 80% RH	25°F SST	6°C TD 80% RH		CFM	m ³ H	in	mm	ft	m	ft	m	
	BTUH		Watts										
6 Fins Per Inch	AEW0720XC6AWA	64,288		18,841	1	6,280	10,670	30	762	110	34	190	58
	AEW0825XC6AWA	73,468		21,531	1	6,280	10,670	30	762	110	34	190	58
	AEW1450XC6AWA	129,224		37,872	2	12,560	21,340	30	762	110	34	190	58
	AEW1650XC6AWA	147,327		43,177	2	12,560	21,340	30	762	110	34	190	58
	AEW2190XC6AWA	195,534		57,305	3	18,840	32,009	30	762	110	34	190	58
	AEW2505XC6AWA	223,870		65,610	3	18,840	32,009	30	762	110	34	190	58
4 Fins Per Inch	AEW0600XC4AWA	53,265		15,611	1	6,280	10,670	30	762	110	34	190	58
	AEW0705XC4AWA	62,985		18,459	1	6,280	10,670	30	762	110	34	190	58
	AEW1210XC4AWA	107,956		31,639	2	12,560	21,340	30	762	110	34	190	58
	AEW1410XC4AWA	125,699		36,839	2	12,560	21,340	30	762	110	34	190	58
	AEW1815XC4AWA	162,242		47,548	3	18,840	32,009	30	762	110	34	190	58
	AEW2155XC4AWA	192,475		56,409	3	18,840	32,009	30	762	110	34	190	58

SPECIFICATIONS

Air Defrost - 50 Hz

Model		No. of Motors	Totally Enclosed and Variable Speed Motors		
			380V / 50Hz		
Standard Refrigerants	CO ₂		Motor HP	Motor Amps	Motor Watts
AEW0915XS4ATA	AEW0705XC4ATA	1	3	3.8	1,626
AEW1115XS4ATA	AEW0830XC4ATA	1	3	3.8	1,626
AEW1150XS6ATA	AEW0850XC6ATA	1	3	3.8	1,626
AEW1365XS6ATA	AEW0970XC6ATA	1	3	3.8	1,626
AEW1845XS4ATA	AEW1425XC4ATA	2	3	7.6	3,251
AEW2280XS4ATA	AEW1655XC4ATA	2	3	7.6	3,251
AEW2320XS6ATA	AEW1705XC6ATA	2	3	7.6	3,251
AEW2745XS4ATA	AEW1940XC6ATA	2	3	7.6	3,251
AEW2795XS6ATA	AEW2135XC4ATA	3	3	11.4	4,877
AEW3345XS4ATA	AEW2535XC4ATA	3	3	11.4	4,877
AEW3455XS6ATA	AEW2575XC6ATA	3	3	11.4	4,877
AEW4100XS6ATA	AEW2950XC6ATA	3	3	11.4	4,877

Model		No. of Motors	Washdown Motors		
			380V / 50Hz		
Standard Refrigerants	CO ₂		Motor HP	Motor Amps	Motor Watts
AEW0780XS4AWA	AEW0600XC4AWA	1	1-3/4	2.8	1,198
AEW0950XS4AWA	AEW0705XC4AWA	1	1-3/4	2.8	1,198
AEW0975XS6AWA	AEW0720XC6AWA	1	1-3/4	2.8	1,198
AEW1160XS6AWA	AEW0825XC6AWA	1	1-3/4	2.8	1,198
AEW1570XS4AWA	AEW1210XC4AWA	2	1-3/4	5.6	2,396
AEW1940XS4AWA	AEW1410XC4AWA	2	1-3/4	5.6	2,396
AEW1970XS6AWA	AEW1450XC6AWA	2	1-3/4	5.6	2,396
AEW2335XS4AWA	AEW1650XC6AWA	2	1-3/4	5.6	2,396
AEW2375XS6AWA	AEW1815XC4AWA	3	1-3/4	8.4	3,594
AEW2845XS4AWA	AEW2155XC4AWA	3	1-3/4	8.4	3,594
AEW2935XS6AWA	AEW2190XC6AWA	3	1-3/4	8.4	3,594
AEW3485XS6AWA	AEW2505XC6AWA	3	1-3/4	8.4	3,594

PERFORMANCE DATA

Selection Capacity: Low Temp Electric Defrost - 50 Hz

Totally Enclosed and Variable Speed Motors														
Model	Selection Capacity				Fan Data					Air Throw				
	R-404A/R-507A		R-407A/R-407F											
	10°F TD -20°F SST <50% RH	6°C TD -29°C SST <50% RH	10°F TD -20°F SST <50% RH	6°C TD -29°C SST <50% RH	No. of Fans	Air Volume		Diameter		Standard		With Collar		
	BTUH	Watts	BTUH	Watts		CFM	m³H	in	mm	ft	m	ft	m	
4 Fins Per Inch	AEW0630XS4ETA	42,772	12,535	59,947	17,569	1	8,380	14,238	30	762	150	46	250	76
	AEW0775XS4ETA	51,444	15,077	72,768	21,326	1	8,380	14,238	30	762	150	46	250	76
	AEW1275XS4ETA	86,381	25,316	121,382	35,574	2	16,760	28,475	30	762	150	46	250	76
	AEW1555XS4ETA	103,993	30,477	147,292	43,167	2	16,760	28,475	30	762	150	46	250	76
	AEW1925XS4ETA	121,650	35,652	172,733	50,623	3	25,140	42,713	30	762	150	46	250	76
	AEW2375XS4ETA	147,840	43,328	214,727	62,930	3	25,140	42,713	30	762	150	46	250	76
3 Fins Per Inch	AEW0555XS3ETA	38,261	11,213	53,141	15,574	1	8,380	14,238	30	762	150	46	250	76
	AEW0685XS3ETA	45,936	13,463	65,302	19,138	1	8,380	14,238	30	762	150	46	250	76
	AEW1120XS3ETA	77,171	22,616	107,382	31,470	2	16,760	28,475	30	762	150	46	250	76
	AEW1360XS3ETA	93,011	27,259	132,015	38,690	2	16,760	28,475	30	762	150	46	250	76
	AEW1685XS3ETA	111,165	32,579	156,721	45,930	3	25,140	42,713	30	762	150	46	250	76
	AEW2110XS3ETA	136,886	40,117	196,473	57,580	3	25,140	42,713	30	762	150	46	250	76

PERFORMANCE DATA

Selection Capacity: Low Temp Electric Defrost - 50 Hz

Totally Enclosed and Variable Speed Motors														
Model	Selection Capacity				No. of Fans	Fan Data				Air Throw				
	R-407C		R-448A/R-449A			Air Volume		Diameter		Standard		With Collar		
	10°F TD -20°F SST <50% RH	6°C TD -29°C SST <50% RH	10°F TD -20°F SST <50% RH	6°C TD -29°C SST <50% RH		CFM	m ³ H	in	mm	ft	m	ft	m	
	BTUH	Watts	BTUH	Watts										
4 Fins Per Inch	AEW0630XS4ETA	56,555	16,575	62,738	18,387	1	8,380	14,238	30	762	150	46	250	76
	AEW0775XS4ETA	68,855	20,180	75,776	22,208	1	8,380	14,238	30	762	150	46	250	76
	AEW1275XS4ETA	114,584	33,581	127,075	37,242	2	16,760	28,475	30	762	150	46	250	76
	AEW1555XS4ETA	139,394	40,852	153,447	44,971	2	16,760	28,475	30	762	150	46	250	76
	AEW1925XS4ETA	155,114	45,459	180,945	53,030	3	25,140	42,713	30	762	150	46	250	76
	AEW2375XS4ETA	194,263	56,933	223,316	65,447	3	25,140	42,713	30	762	150	46	250	76
3 Fins Per Inch	AEW0555XS3ETA	50,406	14,773	55,264	16,196	1	8,380	14,238	30	762	150	46	250	76
	AEW0685XS3ETA	61,997	18,169	67,667	19,831	1	8,380	14,238	30	762	150	46	250	76
	AEW1120XS3ETA	101,901	29,864	111,713	32,740	2	16,760	28,475	30	762	150	46	250	76
	AEW1360XS3ETA	125,268	36,713	136,770	40,083	2	16,760	28,475	30	762	150	46	250	76
	AEW1685XS3ETA	142,533	41,772	161,054	47,200	3	25,140	42,713	30	762	150	46	250	76
	AEW2110XS3ETA	179,413	52,581	199,215	58,384	3	25,140	42,713	30	762	150	46	250	76

PERFORMANCE DATA – CO₂

Selection Capacity: Low Temp Electric Defrost - 50 Hz

Washdown Motors												
Model	Selection Capacity		Fan Data				Air Throw					
	R-744 (CO ₂)		No. of Fans	Air Volume		Diameter		Standard		With Collar		
	10°F TD <50% RH	-20°F SST <50% RH		6°C TD <50% RH	-29°C SST <50% RH	CFM	m ³ H	in	mm	ft	m	ft
	BTUH	Watts										
4 Fins Per Inch	AEW0640XC4ETA	57,365	16,812	1	8,380	14,238	30	762	150	46	250	76
	AEW0765XC4ETA	68,666	20,124	1	8,380	14,238	30	762	150	46	250	76
	AEW1285XC4ETA	115,283	33,786	2	16,760	28,475	30	762	150	46	250	76
	AEW1535XC4ETA	137,823	40,392	2	16,760	28,475	30	762	150	46	250	76
	AEW1905XC4ETA	171,235	50,184	3	25,140	42,713	30	762	150	46	250	76
	AEW2240XC4ETA	201,570	59,074	3	25,140	42,713	30	762	150	46	250	76
3 Fins Per Inch	AEW0580XC3ETA	51,889	15,207	1	8,380	14,238	30	762	150	46	250	76
	AEW0710XC3ETA	63,900	18,727	1	8,380	14,238	30	762	150	46	250	76
	AEW1160XC3ETA	104,166	30,528	2	16,760	28,475	30	762	150	46	250	76
	AEW1410XC3ETA	126,860	37,179	2	16,760	28,475	30	762	150	46	250	76
	AEW1730XC3ETA	155,543	45,585	3	25,140	42,713	30	762	150	46	250	76
	AEW2075XC3ETA	186,355	54,615	3	25,140	42,713	30	762	150	46	250	76

PERFORMANCE DATA

Selection Capacity: Medium Temp Electric Defrost - 50 Hz

Totally Enclosed and Variable Speed Motors														
Model	Selection Capacity				No. of Fans	Fan Data				Air Throw				
	R-404A/R-507A		R-407A/R-407F			Air Volume		Diameter		Standard		With Collar		
	10°F TD 25°F SST 80% RH	6°C TD -4°C SST 80% RH	10°F TD 25°F SST 80% RH	6°C TD -4°C SST 80% RH		CFM	m ³ H	in	mm	ft	m	ft	m	
	BTUH	Watts	BTUH	Watts										
4 Fins Per Inch	AEW0630XS4ETA	60,559	17,748	90,344	26,477	1	8,380	14,238	30	762	150	46	250	76
	AEW0775XS4ETA	68,572	20,096	108,998	31,944	1	8,380	14,238	30	762	150	46	250	76
	AEW1275XS4ETA	98,866	28,975	182,752	53,559	2	16,760	28,475	30	762	150	46	250	76
	AEW1555XS4ETA	140,579	41,200	223,852	65,604	2	16,760	28,475	30	762	150	46	250	76
	AEW1925XS4ETA	149,274	43,748	278,744	81,692	3	25,140	42,713	30	762	150	46	250	76
	AEW2375XS4ETA	209,909	61,518	337,703	98,971	3	25,140	42,713	30	762	150	46	250	76
3 Fins Per Inch	AEW0555XS3ETA	56,174	16,463	79,211	23,214	1	8,380	14,238	30	762	150	46	250	76
	AEW0685XS3ETA	62,904	18,435	96,988	28,424	1	8,380	14,238	30	762	150	46	250	76
	AEW1120XS3ETA	110,951	32,517	160,114	46,925	2	16,760	28,475	30	762	150	46	250	76
	AEW1360XS3ETA	127,038	37,231	199,076	58,343	2	16,760	28,475	30	762	150	46	250	76
	AEW1685XS3ETA	133,094	39,006	246,793	72,328	3	25,140	42,713	30	762	150	46	250	76
	AEW2110XS3ETA	191,893	56,238	302,708	88,715	3	25,140	42,713	30	762	150	46	250	76

PERFORMANCE DATA

Selection Capacity: Medium Temp Electric Defrost - 50 Hz

Totally Enclosed and Variable Speed Motors														
Model	Selection Capacity				No. of Fans	Fan Data				Air Throw				
	R-407C		R-448A/R-449A			Air Volume		Diameter		Standard		With Collar		
	10°F TD 25°F SST 80% RH	6°C TD -4°C SST 80% RH	10°F TD 25°F SST 80% RH	6°C TD -4°C SST 80% RH		CFM	m ³ H	in	mm	ft	m	ft	m	
	BTUH	Watts	BTUH	Watts										
4 Fins Per Inch	AEW0630XS4ETA	94,649	27,739	91,749	26,889	1	8,380	14,238	30	762	150	46	250	76
	AEW0775XS4ETA	114,112	33,443	109,951	32,224	1	8,380	14,238	30	762	150	46	250	76
	AEW1275XS4ETA	191,225	56,042	185,315	54,310	2	16,760	28,475	30	762	150	46	250	76
	AEW1555XS4ETA	230,395	67,522	222,008	65,064	2	16,760	28,475	30	762	150	46	250	76
	AEW1925XS4ETA	287,047	84,125	288,526	84,559	3	25,140	42,713	30	762	150	46	250	76
	AEW2375XS4ETA	352,695	103,365	353,950	103,733	3	25,140	42,713	30	762	150	46	250	76
3 Fins Per Inch	AEW0555XS3ETA	83,000	24,325	79,803	23,388	1	8,380	14,238	30	762	150	46	250	76
	AEW0685XS3ETA	101,575	29,769	97,244	28,499	1	8,380	14,238	30	762	150	46	250	76
	AEW1120XS3ETA	167,569	49,110	161,052	47,200	2	16,760	28,475	30	762	150	46	250	76
	AEW1360XS3ETA	204,950	60,065	196,190	57,498	2	16,760	28,475	30	762	150	46	250	76
	AEW1685XS3ETA	255,698	74,938	252,514	74,005	3	25,140	42,713	30	762	150	46	250	76
	AEW2110XS3ETA	317,749	93,123	313,105	91,762	3	25,140	42,713	30	762	150	46	250	76

PERFORMANCE DATA – CO₂

Selection Capacity: Medium Temp Electric Defrost - 50 Hz

Washdown Motors												
Model	Selection Capacity		Fan Data				Air Throw					
	R-744 (CO ₂)		No. of Fans	Air Volume		Diameter		Standard		With Collar		
	10°F TD 80% RH	25°F SST 80% RH		6°C TD	-4°C SST 80% RH	CFM	m ³ H	in	mm	ft	m	
	BTUH	Watts	ft	m	ft	m						
4 Fins Per Inch	AEW0640XC4ETA	63,077	18,486	1	8,380	14,238	30	762	150	46	250	76
	AEW0765XC4ETA	74,588	21,859	1	8,380	14,238	30	762	150	46	250	76
	AEW1285XC4ETA	127,843	37,467	2	16,760	28,475	30	762	150	46	250	76
	AEW1535XC4ETA	148,855	43,625	2	16,760	28,475	30	762	150	46	250	76
	AEW1905XC4ETA	192,128	56,307	3	25,140	42,713	30	762	150	46	250	76
	AEW2240XC4ETA	227,930	66,800	3	25,140	42,713	30	762	150	46	250	76
3 Fins Per Inch	AEW0580XC3ETA	56,552	16,574	1	8,380	14,238	30	762	150	46	250	76
	AEW0710XC3ETA	68,381	20,041	1	8,380	14,238	30	762	150	46	250	76
	AEW1160XC3ETA	115,250	33,777	2	16,760	28,475	30	762	150	46	250	76
	AEW1410XC3ETA	136,049	39,872	2	16,760	28,475	30	762	150	46	250	76
	AEW1730XC3ETA	172,416	50,530	3	25,140	42,713	30	762	150	46	250	76
	AEW2075XC3ETA	209,341	61,352	3	25,140	42,713	30	762	150	46	250	76

SPECIFICATIONS

Electric Defrost - 50 Hz

Model		No. of Motors	Totally Enclosed and Variable Speed Motors					Defrost Heaters	
			380V / 50Hz					Watts	Total Amps
Standard Refrigerants	CO ²		Motor HP	Motor Amps	Motor Watts	Fan Circuit MCA	Fan Circuit MOPD		380V / 50Hz
AEW0555XS3ETA	AEW0580XC3ETA	1	3	3.8	1,626	4.8	15	13,171	20.3
AEW0630XS4ETA	AEW0640XC4ETA	1	3	3.8	1,626	4.8	15	13,171	20.3
AEW0685XS3ETA	AEW0710XC3ETA	1	3	3.8	1,626	4.8	15	13,171	20.3
AEW0775XS4ETA	AEW0765XC4ETA	1	3	3.8	1,626	4.8	15	13,171	20.3
AEW1120XS3ETA	AEW1160XC3ETA	2	3	7.6	3,251	8.6	15	25,932	39.9
AEW1275XS4ETA	AEW1285XC4ETA	2	3	7.6	3,251	8.6	15	25,932	39.9
AEW1360XS3ETA	AEW1410XC3ETA	2	3	7.6	3,251	8.6	15	25,932	39.9
AEW1555XS4ETA	AEW1535XC4ETA	2	3	7.6	3,251	8.6	15	25,932	39.9
AEW1685XS3ETA	AEW1730XC3ETA	3	3	11.4	4,877	12.4	20	38,693	59.6
AEW1925XS4ETA	AEW1905XC4ETA	3	3	11.4	4,877	12.4	20	38,693	59.6
AEW2110XS3ETA	AEW2075XC3ETA	3	3	11.4	4,877	12.4	20	38,693	59.6
AEW2375XS4ETA	AEW2240XC4ETA	3	3	11.4	4,877	12.4	20	38,693	59.6

PERFORMANCE DATA

Selection Capacity: Hot Gas Defrost - 50 Hz

Totally Enclosed and Variable Speed Motors														
Model	Selection Capacity				No. of Fans	Fan Data				Air Throw				
	R-404A/R-507A		R-407A/R-407F			Air Volume		Diameter		Standard		With Collar		
	10°F TD -20°F SST <50% RH	6°C TD -29°C SST <50% RH	10°F TD -20°F SST <50% RH	6°C TD -29°C SST <50% RH		CFM	m ³ H	in	mm	ft	m	ft	m	
	BTUH	Watts	BTUH	Watts										
4 Fins Per Inch	AEW0630XS4HTA	42,772	12,535	59,947	17,569	1	8,380	14,238	30	762	150	46	250	76
	AEW0775XS4HTA	51,444	15,077	72,768	21,326	1	8,380	14,238	30	762	150	46	250	76
	AEW1275XS4HTA	86,381	25,316	121,382	35,574	2	16,760	28,475	30	762	150	46	250	76
	AEW1555XS4HTA	103,993	30,477	147,292	43,167	2	16,760	28,475	30	762	150	46	250	76
	AEW1925XS4HTA	121,650	35,652	172,733	50,623	3	25,140	42,713	30	762	150	46	250	76
	AEW2375XS4HTA	147,840	43,328	214,727	62,930	3	25,140	42,713	30	762	150	46	250	76
3 Fins Per Inch	AEW0555XS3HTA	38,261	11,213	53,141	15,574	1	8,380	14,238	30	762	150	46	250	76
	AEW0685XS3HTA	45,936	13,463	65,302	19,138	1	8,380	14,238	30	762	150	46	250	76
	AEW1120XS3HTA	77,171	22,616	107,382	31,470	2	16,760	28,475	30	762	150	46	250	76
	AEW1360XS3HTA	93,011	27,259	132,015	38,690	2	16,760	28,475	30	762	150	46	250	76
	AEW1685XS3HTA	111,165	32,579	156,721	45,930	3	25,140	42,713	30	762	150	46	250	76
	AEW2110XS3HTA	136,886	40,117	196,473	57,580	3	25,140	42,713	30	762	150	46	250	76

PERFORMANCE DATA

Selection Capacity: Hot Gas Defrost - 50 Hz

Totally Enclosed and Variable Speed Motors														
Model	Selection Capacity				Fan Data					Air Throw				
	R-407C		R-448A/R-449A		No. of Fans	Air Volume		Diameter		Standard		With Collar		
	10°F TD -20°F SST <50% RH	6°C TD -29°C SST <50% RH	10°F TD -20°F SST <50% RH	6°C TD -29°C SST <50% RH		CFM	m³H	in	mm	ft	m	ft	m	
	BTUH	Watts	BTUH	Watts										
4 Fins Per Inch	AEW0630XS4HTA	56,555	16,575	62,738	18,387	1	8,380	14,238	30	762	150	46	250	76
	AEW0775XS4HTA	68,855	20,180	75,776	22,208	1	8,380	14,238	30	762	150	46	250	76
	AEW1275XS4HTA	114,584	33,581	127,075	37,242	2	16,760	28,475	30	762	150	46	250	76
	AEW1555XS4HTA	139,394	40,852	153,447	44,971	2	16,760	28,475	30	762	150	46	250	76
	AEW1925XS4HTA	155,114	45,459	180,945	53,030	3	25,140	42,713	30	762	150	46	250	76
	AEW2375XS4HTA	194,263	56,933	223,316	65,447	3	25,140	42,713	30	762	150	46	250	76
3 Fins Per Inch	AEW0555XS3HTA	50,406	14,773	55,264	16,196	1	8,380	14,238	30	762	150	46	250	76
	AEW0685XS3HTA	61,997	18,169	67,667	19,831	1	8,380	14,238	30	762	150	46	250	76
	AEW1120XS3HTA	101,901	29,864	111,713	32,740	2	16,760	28,475	30	762	150	46	250	76
	AEW1360XS3HTA	125,268	36,713	136,770	40,083	2	16,760	28,475	30	762	150	46	250	76
	AEW1685XS3HTA	142,533	41,772	161,054	47,200	3	25,140	42,713	30	762	150	46	250	76
	AEW2110XS3HTA	179,413	52,581	199,215	58,384	3	25,140	42,713	30	762	150	46	250	76

SPECIFICATIONS

Hot Gas Defrost - 50 Hz

Model	No. of Motors	Totally Enclosed and Variable Speed Motors			Drain Pan Heaters	
		380V / 50Hz			Watts	Total Amps
		Motor HP	Motor Amps	Motor Watts		380V / 50Hz
AEW0555XS3HTA	1	3	3.8	1,626	2,661	4.0
AEW0630XS4HTA	1	3	3.8	1,626	2,661	4.0
AEW0685XS3HTA	1	3	3.8	1,626	2,661	4.0
AEW0775XS4HTA	1	3	3.8	1,626	2,661	4.0
AEW1120XS3HTA	2	3	7.6	3,251	4,913	7.5
AEW1275XS4HTA	2	3	7.6	3,251	4,913	7.5
AEW1360XS3HTA	2	3	7.6	3,251	4,913	7.5
AEW1555XS4HTA	2	3	7.6	3,251	4,913	7.5
AEW1685XS3HTA	3	3	11.4	4,877	7,165	10.9
AEW1925XS4HTA	3	3	11.4	4,877	7,165	10.9
AEW2110XS3HTA	3	3	11.4	4,877	7,165	10.9
AEW2375XS4HTA	3	3	11.4	4,877	7,165	10.9

PHYSICAL DATA - STANDARD REFRIGERANT

Air Defrost

	Model	No. of Fans	Connections (in)				Aprox. Net Wt.	
			Coil Inlet ODF	Suction ODF	External Equalizer ODF	Drain FPT	lbs	kg
6 Fins Per Inch	AEW0975*S6AWA	1	1-3/8	2-1/8	1/4	1-1/4	1,500	680
	AEW1150*S6ATA	1	1-3/8	2-1/8	1/4	1-1/4	1,500	680
	AEW1160*S6AWA	1	1-3/8	2-1/8	1/4	1-1/4	1,600	730
	AEW1365*S6ATA	1	1-3/8	2-1/8	1/4	1-1/4	1,600	730
	AEW1970*S6AWA	2	2 x 1-3/8	2 x 2-1/8	2 x 1/4	1-1/4	2,500	1,130
	AEW2320*S6ATA	2	2 x 1-3/8	2 x 2-1/8	2 x 1/4	1-1/4	2,500	1,130
	AEW2375*S6AWA	2	2 x 1-3/8	2 x 2-1/8	2 x 1/4	1-1/4	2,700	1,230
	AEW2795*S6ATA	2	2 x 1-3/8	2 x 2-1/8	2 x 1/4	1-1/4	2,700	1,230
	AEW2935*S6AWA	3	2 x 1-3/8	2 x 2-5/8	2 x 1/4	1-1/4	3,500	1,590
	AEW3455*S6ATA	3	2 x 1-3/8	2 x 2-5/8	2 x 1/4	1-1/4	3,500	1,590
	AEW3485*S6AWA	3	2 x 1-5/8	2 x 2-5/8	2 x 1/4	1-1/4	3,800	1,720
	AEW4100*S6ATA	3	2 x 1-5/8	2 x 2-5/8	2 x 1/4	1-1/4	3,800	1,720
4 Fins Per Inch	AEW0780*S4AWA	1	1-3/8	2-1/8	1/4	1-1/4	1,410	640
	AEW0915*S4ATA	1	1-3/8	2-1/8	1/4	1-1/4	1,410	640
	AEW0950*S4AWA	1	1-3/8	2-1/8	1/4	1-1/4	910	410
	AEW1115*S4ATA	1	1-3/8	2-1/8	1/4	1-1/4	910	410
	AEW1570*S4AWA	2	2 x 1-3/8	2 x 2-1/8	2 x 1/4	1-1/4	2,410	1,090
	AEW1845*S4ATA	2	2 x 1-3/8	2 x 2-1/8	2 x 1/4	1-1/4	2,410	1,090
	AEW1940*S4AWA	2	2 x 1-3/8	2 x 2-1/8	2 x 1/4	1-1/4	2,580	1,170
	AEW2280*S4ATA	2	2 x 1-3/8	2 x 2-1/8	2 x 1/4	1-1/4	2,580	1,170
	AEW2335*S4AWA	3	2 x 1-3/8	2 x 2-5/8	2 x 1/4	1-1/4	3,360	1,520
	AEW2745*S4ATA	3	2 x 1-3/8	2 x 2-5/8	2 x 1/4	1-1/4	3,360	1,520
	AEW2845*S4AWA	3	2 x 1-5/8	2 x 2-5/8	2 x 1/4	1-1/4	3,620	1,640
	AEW3345*S4ATA	3	2 x 1-5/8	2 x 2-5/8	2 x 1/4	1-1/4	3,620	1,640

Notes:

* = Electrical Code Designator (see Nomenclature for details)

PHYSICAL DATA - STANDARD REFRIGERANT

Electric Defrost

	Model	No. of Fans	Connections (in)				Aprox. Net Wt.	
			Coil Inlet ODF	Suction ODF	External Equalizer ODF	Drain FPT	lbs	kg
3 Fins Per Inch	AEW0555*S3ETA	1	1-3/8	2-5/8	1/4	1-1/4	1,290	590
	AEW0685*S3ETA	1	1-3/8	2-5/8	1/4	1-1/4	1,470	670
	AEW1120*S3ETA	2	2 x 1-3/8	2 x 2-5/8	2 x 1/4	1-1/4	2,310	1,050
	AEW1360*S3ETA	2	2 x 1-3/8	2 x 2-5/8	2 x 1/4	1-1/4	2,540	1,150
	AEW1685*S3ETA	3	2 x 1-3/8	2 x 3-1/8	2 x 1/4	1-1/4	3,390	1,540
	AEW2110*S3ETA	3	2 x 1-5/8	2 x 3-1/8	2 x 1/4	1-1/4	3,630	1,650
4 Fins Per Inch	AEW0630*S4ETA	1	1-3/8	2-5/8	1/4	1-1/4	1,160	530
	AEW0775*S4ETA	1	1-3/8	2-5/8	1/4	1-1/4	1,580	720
	AEW1275*S4ETA	2	2 x 1-3/8	2 x 2-5/8	2 x 1/4	1-1/4	2,470	1,120
	AEW1555*S4ETA	2	2 x 1-3/8	2 x 2-5/8	2 x 1/4	1-1/4	2,640	1,200
	AEW1925*S4ETA	3	2 x 1-3/8	2 x 3-1/8	2 x 1/4	1-1/4	3,450	1,570
	AEW2375*S4ETA	3	2 x 1-5/8	2 x 3-1/8	2 x 1/4	1-1/4	3,720	1,690

Notes:

* = Electrical Code Designator (see Nomenclature for details)

PHYSICAL DATA - STANDARD REFRIGERANT

Hot Gas Defrost

	Model	No. of Fans	Connections (in)					Aprox. Net Wt.		
			Coil Inlet ODF	Suction ODF	External Equalizer ODF	Drain FPT	Hot Gas Side Port	Hot Gas Drain Pan Ref. Conn.	lbs	kg
3 Fins Per Inch	AEW0555*S3HTA	1	1-3/8	2-5/8	1/4	1-1/4	7/8		1,290	590
	AEW0685*S3HTA	1	1-3/8	2-5/8	1/4	1-1/4	7/8		1,470	670
	AEW1120*S3HTA	2	2 x 1-3/8	2 x 2-5/8	2 x 1/4	1-1/4	2 x 7/8		2,310	1,050
	AEW1360*S3HTA	2	2 x 1-3/8	2 x 2-5/8	2 x 1/4	1-1/4	2 x 7/8		2,540	1,150
	AEW1685*S3HTA	3	2 x 1-3/8	2 x 3-1/8	2 x 1/4	1-1/4	2 x 7/8		3,390	1,540
	AEW2110*S3HTA	3	2 x 1-5/8	2 x 3-1/8	2 x 1/4	1-1/4	2 x 1-1/8		3,630	1,650
4 Fins Per Inch	AEW0630*S4HTA	1	1-3/8	2-5/8	1/4	1-1/4	7/8		1,160	530
	AEW0775*S4HTA	1	1-3/8	2-5/8	1/4	1-1/4	7/8		1,580	720
	AEW1275*S4HTA	2	2 x 1-3/8	2 x 2-5/8	2 x 1/4	1-1/4	2 x 7/8		2,470	1,120
	AEW1555*S4HTA	2	2 x 1-3/8	2 x 2-5/8	2 x 1/4	1-1/4	2 x 7/8		2,640	1,200
	AEW1925*S4HTA	3	2 x 1-3/8	2 x 3-1/8	2 x 1/4	1-1/4	2 x 7/8		3,450	1,570
	AEW2375*S4HTA	3	2 x 1-5/8	2 x 3-1/8	2 x 1/4	1-1/4	2 x 1-1/8		3,720	1,690

Notes:

* = Electrical Code Designator (see Nomenclature for details)

PHYSICAL DATA - CO₂

Air Defrost

	Model	No. of Fans	Connections (in)				Aprox. Net Wt.	
			Coil Inlet ODF	Suction ODF	External Equalizer ODF	Drain FPT	lbs	kg
6 Fins Per Inch	AEW0720*C6AWA	1	1	7/8	n/a	1-1/4	1,450	660
	AEW0825*C6AWA	1	1	7/8	n/a	1-1/4	1,540	700
	AEW0850*C6ATA	1	1	7/8	n/a	1-1/4	1,450	660
	AEW0970*C6ATA	1	1	7/8	n/a	1-1/4	1,540	700
	AEW1450*C6AWA	2	1	1-1/8	n/a	1-1/4	2,410	1,090
	AEW1650*C6AWA	2	1	1-1/8	n/a	1-1/4	2,590	1,180
	AEW1705*C6ATA	2	1	1-1/8	n/a	1-1/4	2,410	1,090
	AEW1940*C6ATA	2	1	1-1/8	n/a	1-1/4	2,590	1,180
	AEW2190*C6AWA	3	1	1-3/8	n/a	1-1/4	3,370	1,530
	AEW2505*C6AWA	3	1	1-3/8	n/a	1-1/4	3,630	1,650
	AEW2575*C6ATA	3	1	1-3/8	n/a	1-1/4	3,370	1,530
	AEW2950*C6ATA	3	1	1-3/8	n/a	1-1/4	3,630	1,650
4 Fins Per Inch	AEW0600*C4AWA	1	1	7/8	n/a	1-1/4	1,410	640
	AEW0705*C4ATA	1	1	7/8	n/a	1-1/4	1,410	640
	AEW0705*C4AWA	1	1	7/8	n/a	1-1/4	1,480	670
	AEW0830*C4ATA	1	1	7/8	n/a	1-1/4	1,480	670
	AEW1210*C4AWA	2	1	1-1/8	n/a	1-1/4	2,320	1,050
	AEW1410*C4AWA	2	1	1-1/8	n/a	1-1/4	2,470	1,120
	AEW1425*C4ATA	2	1	1-1/8	n/a	1-1/4	2,320	1,050
	AEW1655*C4ATA	2	1	1-1/8	n/a	1-1/4	2,470	1,120
	AEW1815*C4AWA	3	1	1-3/8	n/a	1-1/4	3,230	1,470
	AEW2135*C4ATA	3	1	1-3/8	n/a	1-1/4	3,230	1,470
	AEW2155*C4AWA	3	1	1-3/8	n/a	1-1/4	3,450	1,570
	AEW2535*C4ATA	3	1	1-3/8	n/a	1-1/4	3,450	1,570

Notes:

* = Electrical Code Designator (see Nomenclature for details)

PHYSICAL DATA - CO₂

Electric Defrost

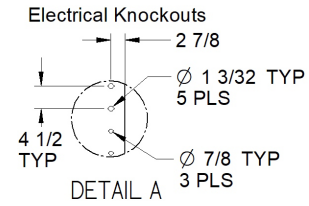
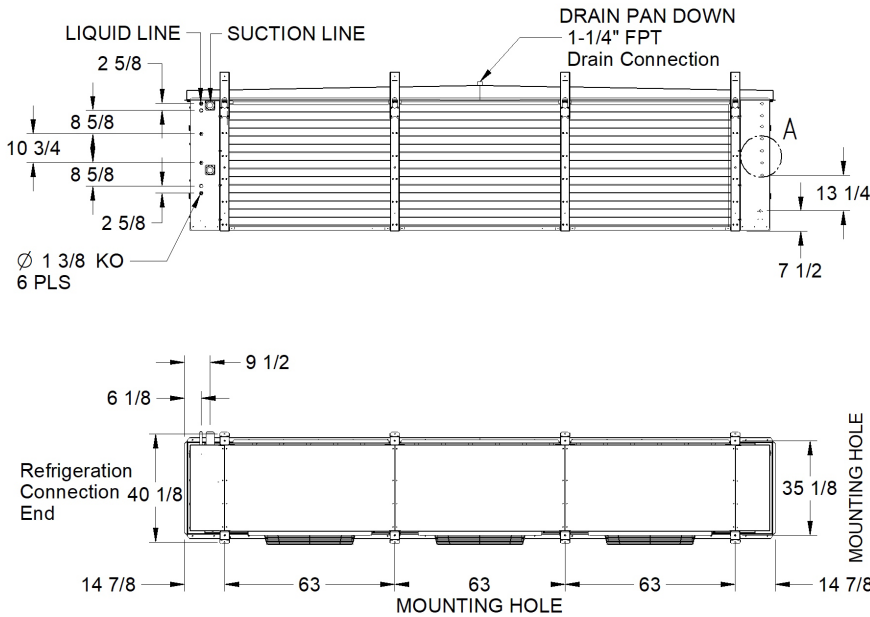
	Model	No. of Fans	Connections (in)				Aprox. Net Wt.	
			Coil Inlet ODF	Suction ODF	External Equalizer ODF	Drain FPT	lbs	kg
4 Fins Per Inch	AEW0640*C4ETA	1	1	1-1/8	n/a	1-1/4	1,440	650
	AEW0765*C4ETA	1	1	1-1/8	n/a	1-1/4	1,510	690
	AEW1285*C4ETA	2	1	1-3/8	n/a	1-1/4	2,380	1,080
	AEW1535*C4ETA	2	1	1-3/8	n/a	1-1/4	2,520	1,140
	AEW1905*C4ETA	3	1	1-5/8	n/a	1-1/4	3,320	1,510
	AEW2240*C4ETA	3	1	1-5/8	n/a	1-1/4	3,540	1,610
3 Fins Per Inch	AEW0580*C3ETA	1	1	1-1/8	n/a	1-1/4	1,410	640
	AEW0710*C3ETA	1	1	1-1/8	n/a	1-1/4	1,480	670
	AEW1160*C3ETA	2	1	1-3/8	n/a	1-1/4	2,330	1,060
	AEW1410*C3ETA	2	1	1-3/8	n/a	1-1/4	2,470	1,120
	AEW1730*C3ETA	3	1	1-5/8	n/a	1-1/4	3,250	1,470
	AEW2075*C3ETA	3	1	1-5/8	n/a	1-1/4	3,450	1,570

Notes:

* = Electrical Code Designator (see Nomenclature for details)

DIMENSIONAL DRAWINGS

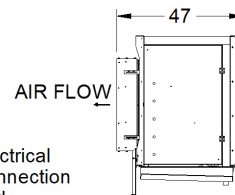
Diagram 1: All Models



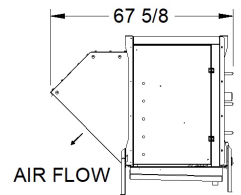
AGENCY LISTINGS



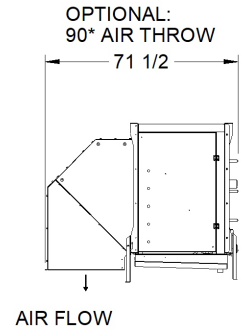
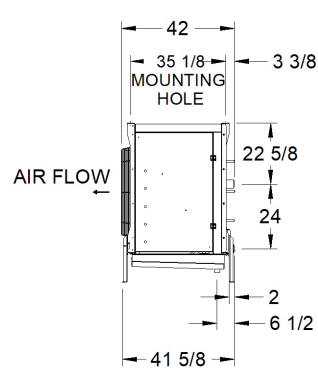
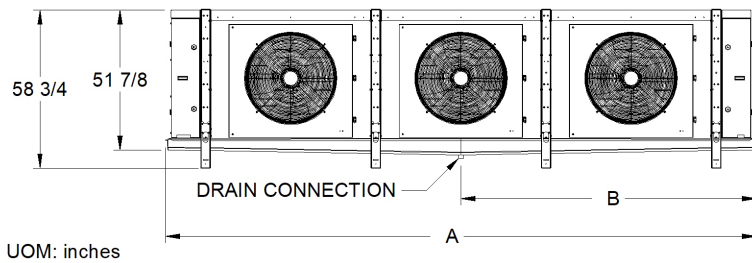
OPTIONAL:
AIR THROW COLLAR



OPTIONAL:
45° AIR THROW



NOTE:
SHIPPING LEGS REMOVED
AFTER INSTALLATION



Dimensional Data For All Models

# of Fans	A		B	
	in.	mm	in.	mm
1 fan	93	2,362	46 1/2	1,181
2 fan	155 7/8	3,959	78	1,981
3 fan	219	5,563	108 3/4	2,762

REPLACEMENT PARTS

Motor/Fan Blade/Fan Guard

Part #	Description
25328601	MOTOR-FAN, 3HP, 230/460V, 1200RPM, TEAO
25328701	MOTOR-FAN, 3HP, 575V, 1200RPM, TEAO
25328801	MOTOR-FAN, 1.75HP, 230/460V, 900RPM, WASH DN
25328901	MOTOR-FAN, 1.75HP, 575V, 900RPM, WASH DN
22919501	BLADE-FAN, 30IN 43.5DEG 6BL
22902901	BLADE-FAN, 30IN, 30DEG 5BL
23105701	FAN GUARD WIDE MOUNT 30 IN

Coil Defrost Heaters

Part #	Description	Unit Voltage	Model	Wire Lead Color Code
24703101	1F 230V COIL HEATER	208-230 & 460	1 Fan Units	Black
24703102	2F 230V COIL HEATER	208-230 & 460	2 Fan Units	Black
24701201	3F 230V COIL HEATER	208-230 & 460	3 Fan Units	Black
24703103	1F 288V COIL HEATER	575	1 Fan Units	Black, Red
24703104	2F 288V COIL HEATER	575	2 Fan Units	Black, Red
24701202	3F 288V COIL HEATER	575	3 Fan Units	Black, Red
23307101	HEATER CLIP	-	HFC Units	
23306501	HEATER CLIP (1/2")	-	CO2 Units	

Drip Tray Defrost Heaters

Part #	Description	Unit Voltage	Model	Wire Lead Color Code
24703201	1F 230V DRIP TRAY HEATER	208-230 & 460	1 Fan Units	Black
24703202	2F 230V DRIP TRAY HEATER	208-230 & 460	2 Fan Units	Black
24703203	3F 230V DRIP TRAY HEATER	208-230 & 460	3 Fan Units	Black
24703204	1F 288V DRIP TRAY HEATER	575	1 Fan Units	Black, Red
24703205	2F 288V DRIP TRAY HEATER	575	2 Fan Units	Black, Red
24703206	3F 288V DRIP TRAY HEATER	575	3 Fan Units	Black, Red
41099701	DRIP TRAY HEATER BRACKETS	-	-	

REPLACEMENT PARTS

Cabinet Sheet Metal

(*01 for Galvanized Steel part, *02 for White Painted Part, *03 for Stainless Steel Part)

Part #	Description
410784*	Electrical End Access Panel
410786*	Refrigeration End Access Panel
410920*	RH Back End Panel
410994*	LH Back End Panel
410929*	RH Top End Panel
410986*	LH Top End Panel
410951*	Top Panel
410780*	Venturi Fan Panel
411000*	Frame Panel

Drainpan Assemblies

Part #	Description	Note
89621901	1 Fan Aluminum Drainpan Assembly	
89621902	1 Fan White Painted Drainpan Assembly	
89628401	1 Fan Stainless Steel Drainpan Assembly	Not Hinged
89610801	2 Fan Aluminum Drainpan Assembly	
89610802	2 Fan White Painted Drainpan Assembly	
89624901	2 Fan Stainless Steel Drainpan Assembly	Not Hinged
89622101	3 Fan Aluminum Drainpan Assembly	
89622102	3 Fan White Painted Drainpan Assembly	
89628501	3 Fan Stainless Steel Drainpan Assembly	Not Hinged

Miscellaneous Components

Part #	Description
4267W	Defrost Termination and Fan Delay Thermostat Adjustable Type
28913901	ROOM THERMOSTAT
38000901	LH Lift-off Hinge (Electrical Access Panel)
38000801	RH Lift-off Hinge (Refrigeration Access Panel, and Venturi Fan Panel)
38001101	Drainpan Hinge
41078201	Black Hanger Bracket

STANDARD NOZZLE SELECTION

Air & Electric Defrost

	Model	No. of Fans	Distributor Tube (in.)		No. of Circuits	Replacement Distributor Assembly	Nozzle Selections			
			OD	Length			R-404A	R-407A/F	R-407C	R-448A/ R-449A
6 FPI Air Defrost	AEW0975*S6AWA	1	3/16	36	24	C29715V1	C-4	C-6	C-6	C-6
	AEW1150*S6ATA	1	3/16	36	24	C29715V1	C-5	C-8	C-6	C-8
	AEW1160*S6AWA	1	3/16	36	32	C29715V2	A-5	A-8	A-8	A-8
	AEW1365*S6ATA	1	3/16	36	32	C29715V2	A-6	A-10	A-10	A-10
	AEW1970*S6AWA	2	3/16	25-1/2	48	C29715T7	2X C-4	2X C-6	2X C-6	2X C-6
	AEW2320*S6ATA	2	3/16	25-1/2	48	C29715T7	2X C-5	2X C-8	2X C-8	2X C-8
	AEW2375*S6AWA	2	3/16	25-1/2	64	C29715U2	2X A-5	2X A-8	2X A-8	2X A-8
	AEW2795*S6ATA	2	3/16	25-1/2	64	C29715U2	2X A-6	2X A-10	2X A-10	2X A-10
	AEW2935*S6AWA	3	3/16	25-1/2	48	C29715T7	2X C-6	2X C-10	2X C-10	2X C-10
	AEW3455*S6ATA	3	3/16	25-1/2	48	C29715T7	2X C-8	2X C-12	2X C-12	2X C-12
	AEW3485*S6AWA	3	3/16	25-1/2	64	C29715U2	2X A-8	2X A-12	2X A-12	2X A-12
AEW4100*S6ATA	3	3/16	25-1/2	64	C29715U2	2X A-10	2X A-15	2X A-15	2X A-15	
4 FPI Air Defrost	AEW0780*S4AWA	1	3/16	36	24	C29715U2	C-4	C-5	C-5	C-5
	AEW0915*S4ATA	1	3/16	36	24	C29715V1	C-4	C-6	C-6	C-6
	AEW0950*S4AWA	1	3/16	36	32	C29715V2	A-4	A-6	A-6	A-6
	AEW1115*S4ATA	1	3/16	36	32	C29715V2	A-5	A-8	A-8	A-8
	AEW1570*S4AWA	2	3/16	25-1/2	48	C29715T7	2X C-3	2X C-5	2X C-5	2X C-5
	AEW1845*S4ATA	2	3/16	25-1/2	48	C29715T7	2X C-4	2X C-6	2X C-6	2X C-6
	AEW1940*S4AWA	2	3/16	25-1/2	64	C29715U2	2X A-4	2X A-6	2X A-6	2X A-6
	AEW2280*S4ATA	2	3/16	25-1/2	64	C29715U2	2X A-5	2X A-8	2X A-8	2X A-8
	AEW2335*S4AWA	3	3/16	25-1/2	48	C29715T7	2X C-5	2X C-8	2X C-8	2X C-8
	AEW2745*S4ATA	3	3/16	25-1/2	48	C29715T7	2X C-5	2X C-10	2X C-8	2X C-10
	AEW2845*S4AWA	3	3/16	25-1/2	64	C29715U2	2X A-6	2X A-12	2X A-10	2X A-12
	AEW3345*S4ATA	3	3/16	25-1/2	64	C29715U2	2X A-8	2X A-12	2X A-12	2X A-12
4 FPI Electric Defrost	AEW0630*S4ETA	1	3/16	36	24	C29715V1	C-6	C-8	C-6	C-8
	AEW0775*S4ETA	1	3/16	36	32	C29715V2	A-8	A-10	A-8	A-10
	AEW1275*S4ETA	2	3/16	25-1/2	48	C29715T7	2X C-6	2X C-8	2X C-8	2X C-8
	AEW1555*S4ETA	2	3/16	25-1/2	64	C29715U2	2X A-8	2X A-12	2X A-10	2X A-12
	AEW1925*S4ETA	3	3/16	25-1/2	48	C29715T7	2X C-10	2X C-12	2X C-10	2X C-12
	AEW2375*S4ETA	3	3/16	25-1/2	64	C29715U2	2X A-12	2X A-15	2X A-12	2X A-15
3 FPI Electric Defrost	AEW0555*S3ETA	1	3/16	36	24	C29715V1	C-5	C-6	C-6	C-6
	AEW0685*S3ETA	1	3/16	36	32	C29715V2	A-8	A-10	A-8	A-10
	AEW1120*S3ETA	2	3/16	25-1/2	48	C29715T7	2X C-6	2X C-8	2X C-6	2X C-8
	AEW1360*S3ETA	2	3/16	25-1/2	64	C29715U2	2X A-8	2X A-10	2X A-8	2X A-10
	AEW1685*S3ETA	3	3/16	25-1/2	48	C29715T7	2X C-8	2X C-10	2X C-10	2X C-10
AEW2110*S3ETA	3	3/16	25-1/2	64	C29715U2	2X A-12	2X A-15	2X A-12	2X A-15	

STANDARD NOZZLE SELECTION

Hot Gas Defrost

	Model	No. of Fans	Distributor Tube (in.)		No. of Circuits	Replacement Distributor Assembly	Nozzle Selections			
			OD	Length			R-404A	R-407A/F	R-407C	R-448A/ R-449A
4 FPI Hot Gas Defrost	AEW0630*S4HTA	1	3/16	36	24	C29715V1	C-6	C-8	C-6	C-8
	AEW0775*S4HTA	1	3/16	36	32	C29715V2	A-8	A-10	A-8	A-10
	AEW1275*S4HTA	2	3/16	25-1/2	48	C29715T7	2X C-6	2X C-8	2X C-8	2X C-8
	AEW1555*S4HTA	2	3/16	25-1/2	64	C29715U2	2X A-8	2X A-12	2X A-10	2X A-12
	AEW1925*S4HTA	3	3/16	25-1/2	48	C29715T7	2X C-10	2X C-12	2X C-10	2X C-12
	AEW2375*S4HTA	3	3/16	25-1/2	64	C29715U2	2X A-12	2X A-15	2X A-12	2X A-15
3 FPI Hot Gas Defrost	AEW0555*S3HTA	1	3/16	36	24	C29715V1	C-5	C-6	C-6	C-6
	AEW0685*S3HTA	1	3/16	36	32	C29715V2	A-8	A-10	A-8	A-10
	AEW1120*S3HTA	2	3/16	25-1/2	48	C29715T7	2X C-6	2X C-8	2X C-6	2X C-8
	AEW1360*S3HTA	2	3/16	25-1/2	64	C29715U2	2X A-8	2X A-10	2X A-8	2X A-10
	AEW1685*S3HTA	3	3/16	25-1/2	48	C29715T7	2X C-8	2X C-10	2X C-10	2X C-10
	AEW2110*S3HTA	3	3/16	25-1/2	64	C29715U2	2X A-12	2X A-15	2X A-12	2X A-15

Notes:

* = Electrical Code Designator (see Nomenclature for details)

Nozzles sized for 90-100°F liquid temperature at expansion valve.

Contact Application Engineering for guidance if:

- Liquid temperature is not 90-100°F
- Evaporator TD is not 10°-15°F (room temperature – saturated suction temperature)
- Electric defrost models with a saturated suction temperature of 10°F or higher



2175 West Park Place Blvd.

Stone Mountain, GA 30087

Phone: 800.537.7775 · Fax: 770.465.5900

heatcraftprd.com

Since product improvement is a continuing effort, we reserve the right to make changes in specifications without notice.

XLUC-0423 | Version 007

©2023 Heatcraft Refrigeration Products LLC